

LOC/DME I-EZA	APP CRS	Rwy Ldg	4R	4L
108.7	039°	TDZE	8809	8459
Chan 24		Apt Elev	11	10
			17	17

ILS or LOC RWY 4R  
NEWARK LIBERTY INTL (EWR)

RNP APCH - GPS.

RADAR required.

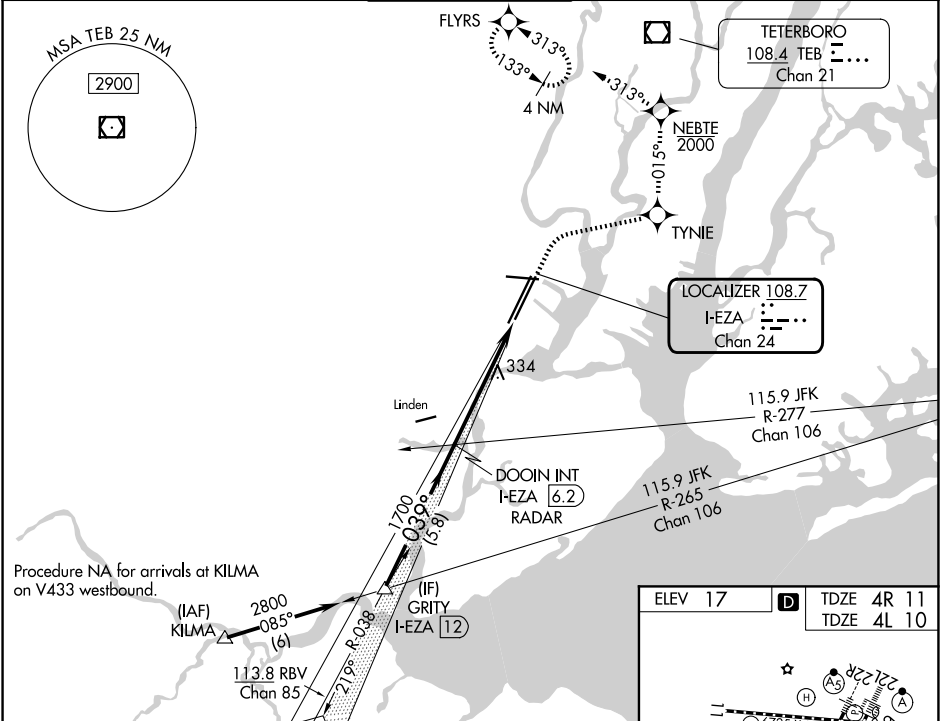
When Circling to Rwy 29 at night, operational VGSI required, remain on or above VGSI glidepath until threshold. For inop ALS, increase Sidestep 4L Cat C visibility to 1½ SM.

4R ALSF-2

4L MALSR

MISSED APPROACH: (Do not exceed 210K until NEBTE) Climb to 560 then climbing right turn to 2000 direct TYNIE and left turn on track 015° to NEBTE, cross NEBTE at or below 2000 then climbing left turn to 3000 on track 313° to FLYRS and hold, continue climb-in-hold to 3000.

D-ATIS	NEWARK APP CON	NEWARK TOWER	GND CON	CLNC DEL	CPDLC
115.7 134.825	128.55 379.9	118.3 257.6	121.8	118.85	



GRITY I-EZA 12

2800

GS 2.95° TCH 55

039°

1700

5.8 NM

3.6 NM

1.7 NM

DOOIN INT I-EZA 6.2

RADAR 1700

VGSI and ILS glidepath not coincident (VGSI Angle 2.95/TCH 71).

I-EZA 2.7

I-EZA 1

560

2000

TYNIE

tr 015°

NEBTE

2000

tr 313°

3000

FLYRS

CATEGORY	A	B	C	D
S-ILS 4R		211/18	200 (200-½)	
S-LOC 4R	600/24	589 (600-½)	600-1¼	589 (600-1¼)
SIDESTEP RWY 4L	600/55	590 (600-1)	600-1¼	600-1½
			590 (600-1¼)	590 (600-1½)
CIRCLING	760-1	743 (800-1)	900-2¾	900-3
			883 (900-2¾)	883 (900-3)

ELEV 17

TDZE 4R 11

TDZE 4L 10

TWR

039°

4L

4R

HIRL All Rwys

REIL Rwys 11, 22R and 29

TDZ/CL All Rwys

FAF to MAP 5.2 NM

Knots	60	90	120	150	180
Min:Sec	5:12	3:28	2:36	2:05	1:44

NE-2, 07 AUG 2025 to 04 SEP 2025

NE-2, 07 AUG 2025 to 04 SEP 2025