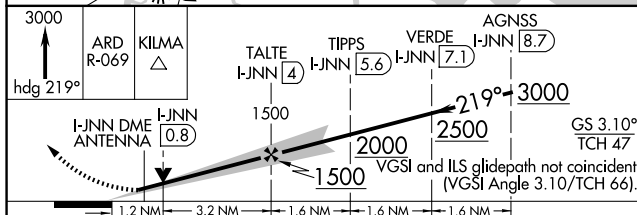
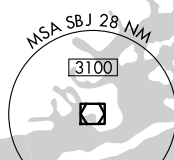
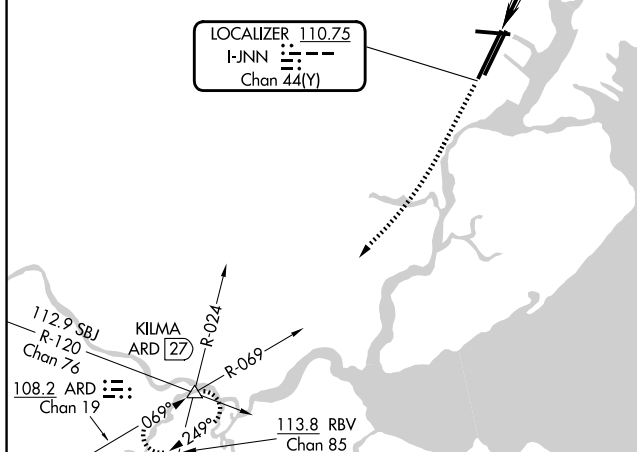
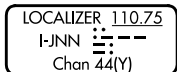


ILS or LOC RWY 22R
NEWARK LIBERTY INTL (EWR)

MISSED APPROACH: Climb to 3000 on heading 219° and ARD VOR/DME R-069 to KILMA INT/ARD 27 DME and hold.

ALTERNATE MISSED APCH FIX

Knots	60	90	120	150	180
Min:Sec	4:24	2:56	2:12	1:46	1:28