

ILS or LOC RWY 22L
NEWARK LIBERTY INTL (EWR)

MISSED APPROACH: Climb to 500 then climbing right turn to 3000 on heading 225° and ARD VOR/DME R-069 to KILMA INT/ARD 27 DME and hold.



KILMA
JFK (30.2)

115.9 JFK

R-265

Chan 106

085°

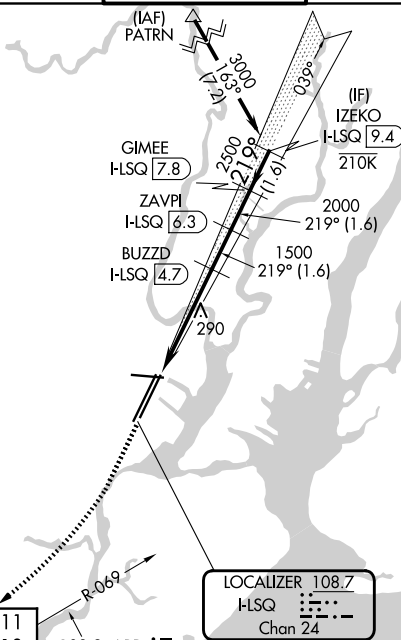
265°


113.8 RBV

R-024

Chan 85

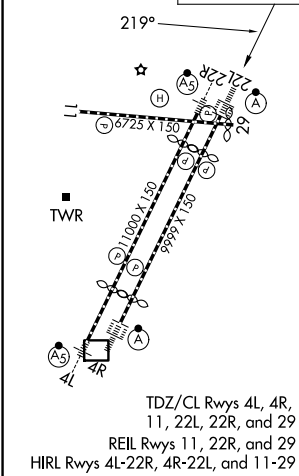
ALTERNATE
MISSED
APCH FIX



KENNEDY
115.9 JFK 
Chan 106

MSA SBJ 28 NM

ELEV 17	D	TDZE 22L 11
		TDZE 22R 10



500 ↑	3000 hdg 225°	ARD R-069	KILMA △	VGSI and ILS glidepath not coincident (VGSI Angle 3.00/TCH 60).			
					IZEKO I-LSQ 9.4 219° 3000 2500 2000 1500 1500 GS 3.00° TCH 43		
CATEGORY	A		B		C		D
S-ILS 22L	211/18 200 (200-½)						
S-LOC 22L	540/24 529 (600-½)			540/55		529 (600-1)	
SIDESTEP RWY 22R	540/55 530 (600-1)					540-1½ 530 (600-1½)	
CIRCLING	660-1 643 (700-1)			900-2¾ 883 (900-2¾)		900-3 883 (900-3)	