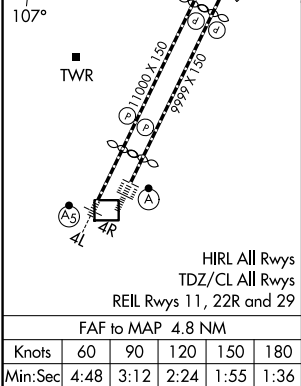
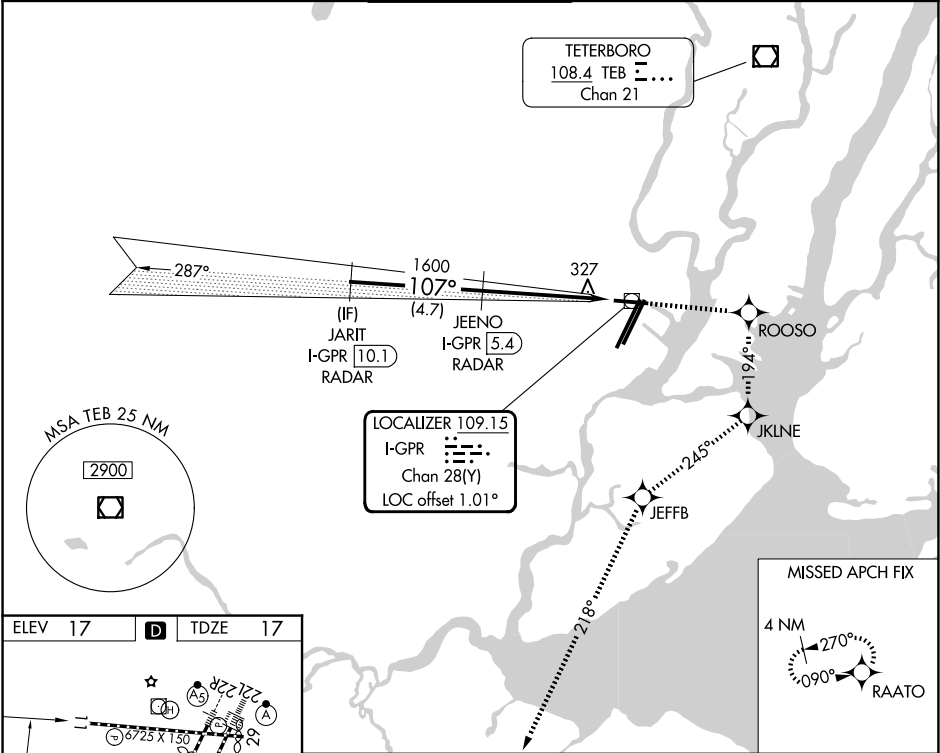


LOC/DME I-GPR	APP CRS	Rwy Ldg
109.15	107°	6725
Chan 28 (Y)		TDZE 17
		Apt Elev 17

ILS or LOC RWY 11
NEWARK LIBERTY INTL (EWR)

RNP APCH - GPS.			MISSED APPROACH: (Do not exceed 230K until JKLNE) Climb to 2000 direct ROOSO and right turn on track 194° to JKLNE and right turn on track 245° to JEFFB and left turn on track 218° to RAATO and hold.			
DME required. RADAR required.						
<div>⚠ Circling NA south of Rwy 11-29. When Circling to Rwy 29 at night, operational VGSI required, remain on or above VGSI glidepath until threshold. Rwy 11 helicopter visibility reduction below ¾ SM NA.</div>						
D-ATIS		NEWARK APP CON	NEWARK TOWER	GND CON	CLNC DEL	CPDLC
115.7 134.825		128.55 379.9	118.3 257.6	121.8	118.85	



ELEV 17 D TDZE 17		MISSED APCH FIX			
		4 NM			
		270°			
		090°			
		RAATO			
		2000 ROOSO			
		JKLNE			
		JEFFB			
		RAATO			
		VGSI and ILS glidepath not coincident (VGSI Angle 3.00/TCH 60).			
		JARIT I-GPR 10.1 RADAR			
		JEENO I-GPR 5.4 RADAR			
		1600 107°			
		1600			
		I-GPR 2.2 I-GPR 0.6			
		GS 3.00° TCH 57			
		4.7 NM 3.2 NM 1.6 NM			
		CATEGORY A B C D			
		S- ILS 11 618-1 3/4 601 (700-1 3/4)			
		S- LOC 11 660/55 643 (700-1) 660-1 5/8 643 (700-1 5/8)			
		CIRCLING 660-1 643 (700-1) 900-2 1/2 883 (900-2 1/2) 900-2 3/4 883 (900-2 3/4)			