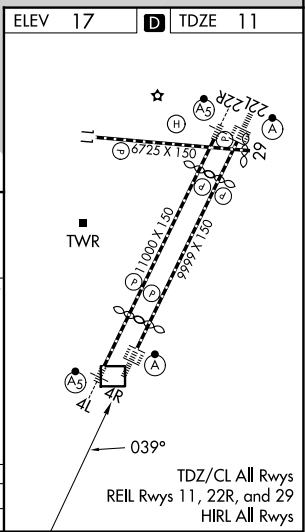
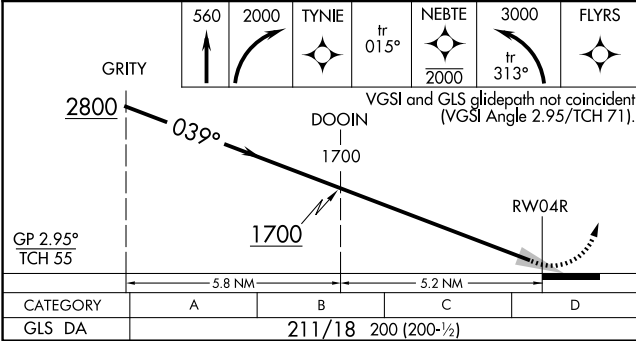
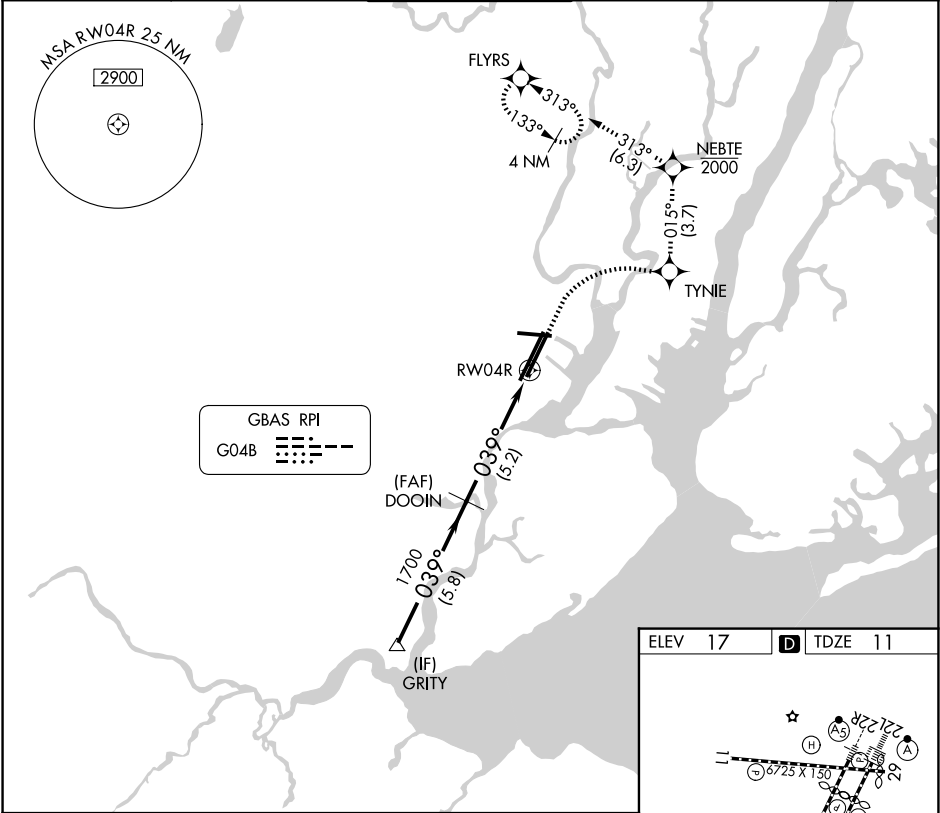


GBAS	APP CRS	Rwy Ldg	8809
CH 21083	039°	TDZE	11
G04B		Apt Elev	17

GLS RWY 4R

NEWARK LIBERTY INTL (EWR)

RNP APCH - GPS.		ALSIF-2	MISSED APPROACH: (Do not exceed 210K until NEBTE) Climb to 560 then climbing right turn to 2000 direct TYNIE and on track 015° to NEBTE, cross NEBTE at or below 2000 then climbing left turn to 3000 on track 313° to FLYRS and hold, continue climb-in-hold to 3000.		
RADAR required.					
Autopilot coupled approach NA below 211.					
<div><div><div><div><div></div><div></div><div></div><div></div><div></div></div><div></div></div><div>NA</div></div></div>		<div><div><div></div><div></div><div></div><div></div><div></div></div><div></div></div>			
D-ATIS	NEWARK APP CON	NEWARK TOWER	GND CON	CLNC DEL	CPDLC
115.7 134.825	128.55 379.9	118.3 257.6	121.8	118.85	



GLS RWY 4R

NE-2, 07 AUG 2025 to 04 SEP 2025

NE-2, 07 AUG 2025 to 04 SEP 2025