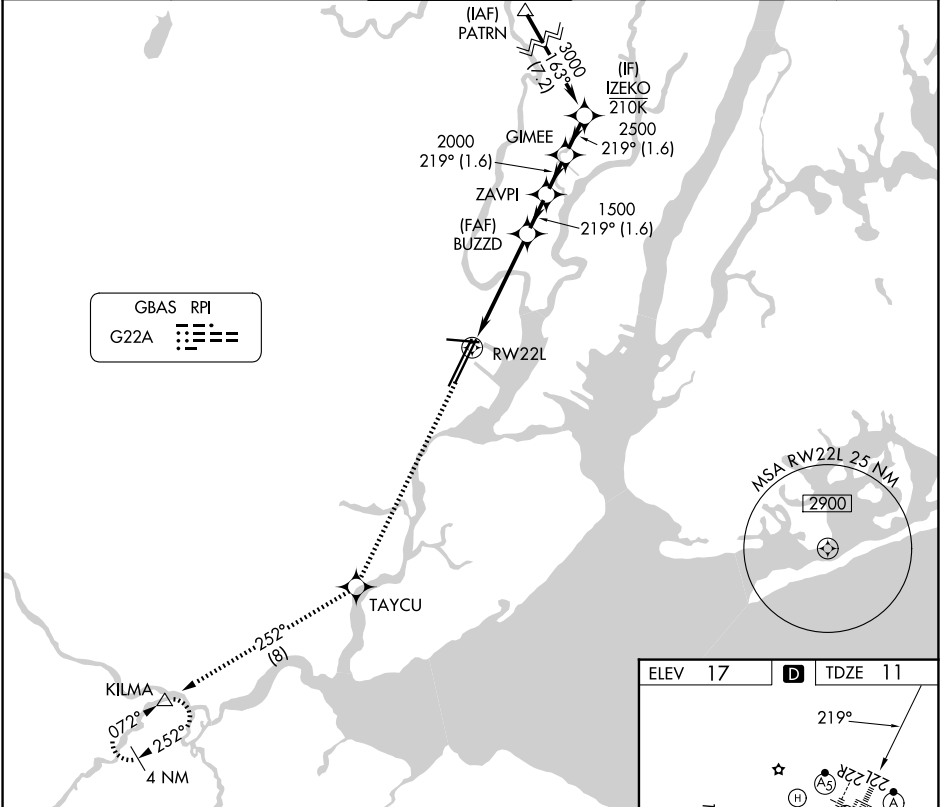


GBAS CH <b>21494</b> <b>G22A</b>	APP CRS <b>219°</b>	Rwy Ldg TDZE <b>11</b> Apt Elev <b>17</b>
--	------------------------	---

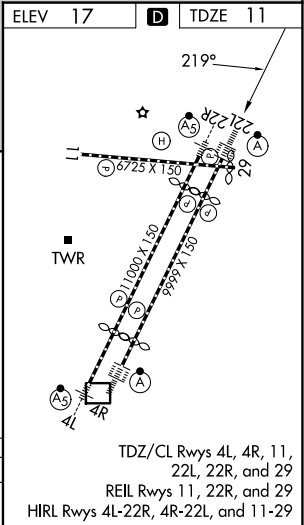
GLS RWY 22L

NEWARK LIBERTY INTL (EWR)

RNP APCH - GPS.			ALSF-2	MISSED APPROACH: Climb to 3000 direct TAYCU and on track 252° to KILMA and hold.		
NA Autopilot coupled approach NA below 211.			A			
D-ATIS <b>115.7 134.825</b>	NEWARK APP CON <b>128.55 379.9</b>	NEWARK TOWER <b>118.3 257.6</b>		GND CON <b>121.8</b>	CLNC DEL <b>118.85</b>	CPDLC



3000 ↑	TAYCU ✱	tr 252°	KILMA △	VGSI and GLS glidepath not coincident (VGSI Angle 3.00/TCH 60).			
CATEGORY	A		B		C		D
GLS DA	211/18 200 (200-½)						



GLS RWY 22L