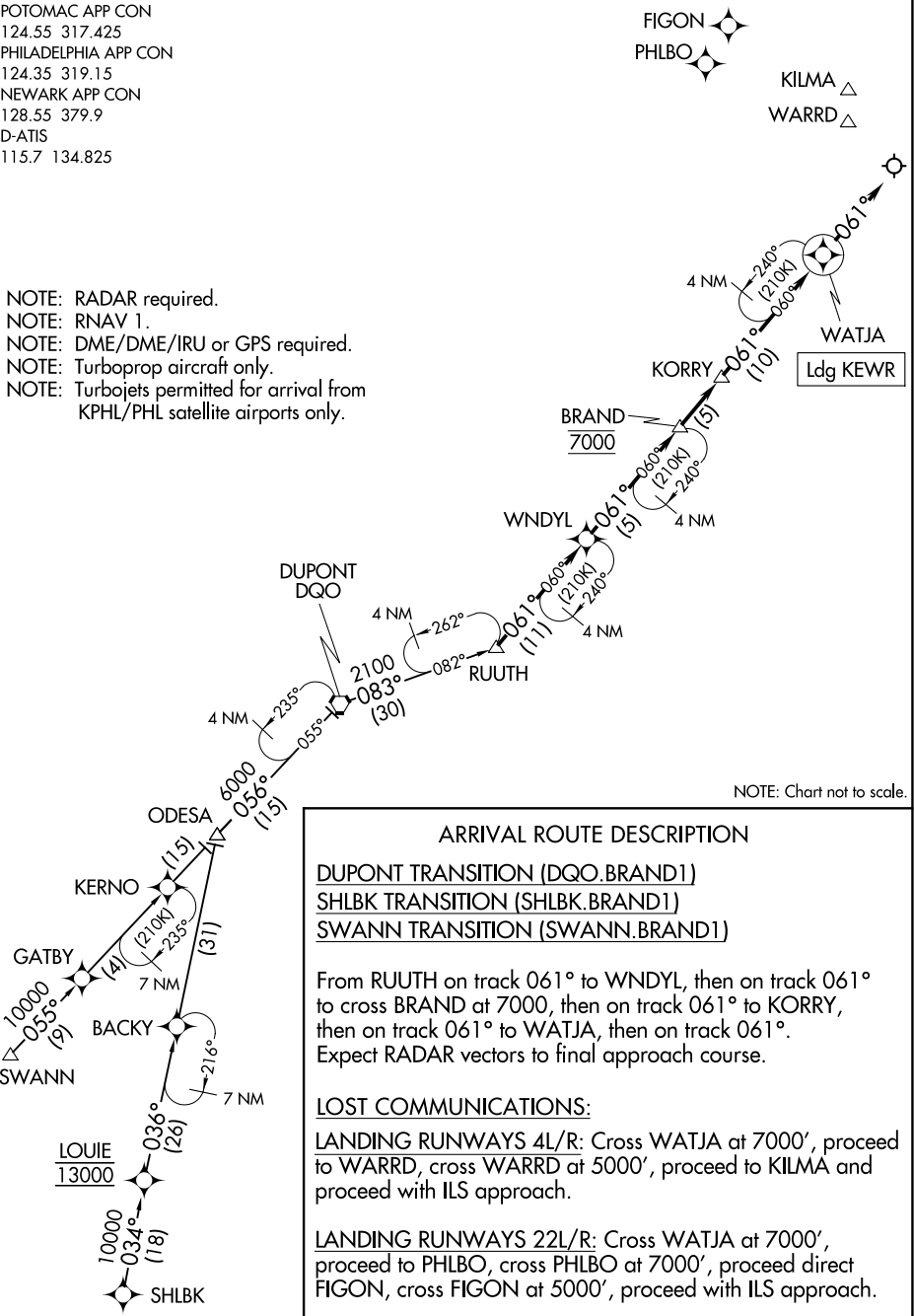


POTOMAC APP CON
124.55 317.425
PHILADELPHIA APP CON
124.35 319.15
NEWARK APP CON
128.55 379.9
D-ATIS
115.7 134.825

- NOTE: RADAR required.
NOTE: RNAV 1.
NOTE: DME/DME/IRU or GPS required.
NOTE: Turboprop aircraft only.
NOTE: Turbojets permitted for arrival from
KPHL/PHL satellite airports only.



NE-2, 07 AUG 2025 to 04 SEP 2025

NE-2, 07 AUG 2025 to 04 SEP 2025