

WAAS CH 65913 W31A	APP CRS 316°	Rwy Ldg TDZE Apt Elev	9487 578 599
--	------------------------	-----------------------------	---

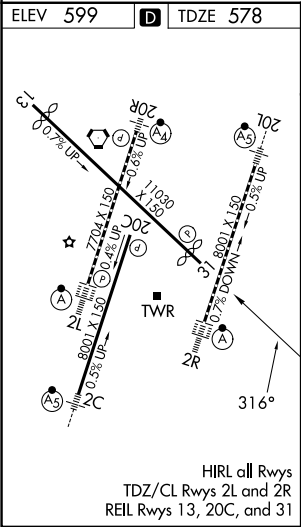
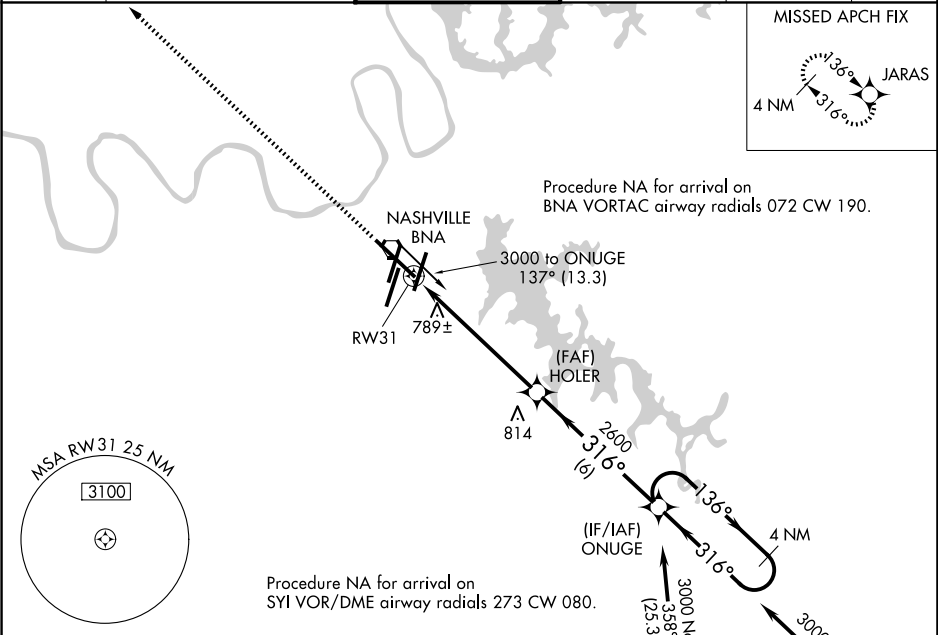
RNAV (GPS) Y RWY 31

NASHVILLE INTL (BNA)

For uncompensated Baro-VNAV systems, LNAV/VNAV NA below -11°C (13°F) or above 54°C (130°F).
DME/DME RNP-0.3 NA.

MISSED APPROACH: Climb to 3100 direct JARAS and hold.

D-ATIS 135.1	NASHVILLE APP CON 118.4 360.7 (030°-196°) 119.35 372.0 (197°-029°)	NASHVILLE TOWER 118.6 257.8	GND CON 121.9 348.6	CLNC DEL 126.05	CPDLC
------------------------	--	---------------------------------------	-------------------------------	---------------------------	-------



3100

JARAS

↑

✴

*LNAV only.

1.4 NM to RW31

4.8 NM

6 NM

RW31

HOLER 2600

ONUGE

4 NM Holding Pattern

GP 3.00°
TCH 52

136°

316°

3000

2600

1.4 NM

4.8 NM

6 NM

316°

136°

3100

JARAS

↑

✴

*LNAV only.

1.4 NM to RW31

4.8 NM

6 NM

RW31

HOLER 2600

ONUGE

4 NM Holding Pattern

GP 3.00°
TCH 52

136°

316°

3000

2600

1.4 NM

4.8 NM

6 NM

316°

136°

3100

JARAS

↑

✴

*LNAV only.

1.4 NM to RW31

4.8 NM

6 NM

RW31

HOLER 2600

ONUGE

4 NM Holding Pattern

GP 3.00°
TCH 52

136°

316°

3000

2600

1.4 NM

4.8 NM

6 NM

316°

136°

3100

JARAS

↑

✴

*LNAV only.

1.4 NM to RW31

4.8 NM

6 NM

RW31

HOLER 2600

ONUGE

4 NM Holding Pattern

GP 3.00°
TCH 52

136°

316°

3000

2600

1.4 NM

4.8 NM

6 NM

316°

136°

3100

JARAS

↑

✴

*LNAV only.

1.4 NM to RW31

4.8 NM

6 NM

RW31

HOLER 2600

ONUGE

4 NM Holding Pattern

GP 3.00°
TCH 52

136°

316°

3000

2600

1.4 NM

4.8 NM

6 NM

316°

136°

3100

JARAS

↑

✴

*LNAV only.

1.4 NM to RW31

4.8 NM

6 NM

RW31

HOLER 2600

ONUGE

4 NM Holding Pattern

GP 3.00°
TCH 52

136°

316°

3000

2600

1.4 NM

4.8 NM

6 NM

316°

136°

3100

JARAS

↑

✴

*LNAV only.

1.4 NM to RW31

4.8 NM

6 NM

RW31

HOLER 2600

ONUGE

4 NM Holding Pattern

GP 3.00°
TCH 52

136°

316°

3000

2600

1.4 NM

4.8 NM

6 NM

316°

136°

3100

JARAS

↑

✴

*LNAV only.

1.4 NM to RW31

4.8 NM

6 NM

RW31

HOLER 2600

ONUGE

4 NM Holding Pattern

GP 3.00°
TCH 52

136°

316°

3000

2600

1.4 NM

4.8 NM

6 NM

316°

136°

3100

JARAS

↑

✴

*LNAV only.

1.4 NM to RW31

4.8 NM

6 NM

RW31

HOLER 2600

ONUGE

4 NM Holding Pattern

GP 3.00°
TCH 52

136°

316°

3000

2600

1.4 NM

4.8 NM

6 NM

316°

136°

3100

JARAS

↑

✴

*LNAV only.

1.4 NM to RW31

4.8 NM

6 NM

RW31

HOLER 2600

ONUGE

4 NM Holding Pattern

GP 3.00°
TCH 52

136°

316°

3000

2600

1.4 NM

4.8 NM

6 NM

316°

136°

3100

JARAS

↑

✴

*LNAV only.

1.4 NM to RW31

4.8 NM

6 NM

RW31

HOLER 2600

ONUGE

4 NM Holding Pattern

GP 3.00°
TCH 52

136°

316°

3000

2600

1.4 NM

4.8 NM

6 NM

316°

136°

3100

JARAS

↑

✴

*LNAV only.

1.4 NM to RW31

4.8 NM

6 NM

RW31

HOLER 2600

ONUGE

4 NM Holding Pattern

GP 3.00°
TCH 52

136°

316°

3000

2600

1.4 NM

4.8 NM

6 NM

316°

136°

3100

JARAS

↑

✴

*LNAV only.

1.4 NM to RW31

4.8 NM

6 NM

RW31

HOLER 2600

ONUGE

4 NM Holding Pattern

GP 3.00°
TCH 52

136°

316°

3000

2600

1.4 NM

4.8 NM

6 NM

316°

136°

3100

JARAS

↑

✴

*LNAV only.

1.4 NM to RW31

4.8 NM

6 NM

RW31

HOLER 2600

ONUGE

4 NM Holding Pattern

GP 3.00°
TCH 52

136°

316°

3000

2600

1.4 NM

4.8 NM

6 NM

316°

136°

3100

JARAS

↑

✴

*LNAV only.

1.4 NM to RW31

4.8 NM

6 NM

RW31

HOLER 2600

ONUGE

4 NM Holding Pattern

GP 3.00°
TCH 52

136°

316°

3000

2600

1.4 NM

4.8 NM

6 NM

316°

136°

3100

JARAS

↑

✴

*LNAV only.

1.4 NM to RW31

4.8 NM

6 NM

RW31

HOLER 2600

ONUGE

4 NM Holding Pattern

GP 3.00°
TCH 52

136°

316°

3000

2600

1.4 NM

4.8 NM

6 NM

316°

136°

3100

JARAS

↑

✴

*LNAV only.

1.4 NM to RW31

4.8 NM

6 NM

RW31

HOLER 2600

ONUGE

4 NM Holding Pattern

GP 3.00°
TCH 52

136°

316°

3000

2600

1.4 NM

4.8 NM

6 NM

316°

136°

3100

JARAS

↑

✴

*LNAV only.

1.4 NM to RW31

4.8 NM

6 NM

RW31

HOLER 2600

ONUGE

4 NM Holding Pattern

GP 3.00°
TCH 52

136°

316°

3000

2600

1.4 NM

4.8 NM

6 NM

316°

136°

3100

JARAS

↑

✴

*LNAV only.

1.4 NM to RW31

4.8 NM

6 NM

RW31

HOLER 2600

ONUGE

4 NM Holding Pattern

GP 3.00°
TCH 52

136°

316°

3000

2600

1.4 NM

4.8 NM

6 NM

316°

136°

3100

JARAS

↑

✴

*LNAV only.

1.4 NM to RW31

4.8 NM

6 NM

RW31

HOLER 2600

ONUGE

4 NM Holding Pattern

GP 3.00°
TCH 52

136°

316°

3000

2600

1.4 NM

4.8 NM

6 NM

316°

136°

3100

JARAS

↑

✴

*LNAV only.

1.4 NM to RW31

4.8 NM

6 NM

RW31

HOLER 2600

ONUGE

4 NM Holding Pattern

GP 3.00°
TCH 52

136°

316°

3000

2600

1.4 NM

4.8 NM

6 NM

316°

136°

3100

JARAS

↑

✴

*LNAV only.

1.4 NM to RW31

4.8 NM

6 NM

RW31

HOLER 2600

ONUGE

4 NM Holding Pattern

GP 3.00°
TCH 52

136°

316°

3000

2600

1.4 NM

4.8 NM

6 NM

316°

136°

3100

JARAS

↑

✴

*LNAV only.

1.4 NM to RW31

4.8 NM

6 NM

RW31

HOLER 2600

ONUGE

4 NM Holding Pattern

GP 3.00°
TCH 52

136°

316°

3000

2600

1.4 NM

4.8 NM

6 NM

316°

136°

3100

JARAS

↑

✴

*LNAV only.

1.4 NM to RW31

4.8 NM

6 NM

RW31

HOLER 2600

ONUGE

4 NM Holding Pattern

GP 3.00°
TCH 52

136°

316°

3000

2600

1.4 NM

4.8 NM

6 NM

316°

136°

3100

JARAS

↑

✴

*LNAV only.

1.4 NM to RW31

4.8 NM

6 NM

RW31

HOLER 2600

ONUGE

4 NM Holding Pattern

GP 3.00°
TCH 52

136°

316°

3000

2600

1.4 NM

4.8 NM

6 NM

316°

136°

3100

JARAS

↑

✴

*LNAV only.

1.4 NM to RW31

4.8 NM

6 NM

RW31

HOLER 2600

ONUGE

4 NM Holding Pattern

GP 3.00°
TCH 52

136°

316°

3000

2600

1.4 NM

4.8 NM

6 NM

316°

136°

3100

JARAS

↑

✴

*LNAV only.

1.4 NM to RW31

4.8 NM

6 NM

RW31

HOLER 2600

ONUGE

4 NM Holding Pattern

GP 3.00°
TCH 52

136°

316°

3000

2600

1.4 NM

4.8 NM

6 NM

316°

136°

3100

JARAS

↑

✴

*LNAV only.

1.4 NM to RW31

4.8 NM

6 NM

RW31

HOLER 2600

ONUGE

4 NM Holding Pattern

GP 3.00°
TCH 52

136°

316°

3000

2600

1.4 NM

4.8 NM

6 NM

316°

136°

3100

JARAS

↑

✴

*LNAV only.

1.4 NM to RW31

4.8 NM

6 NM

RW31

HOLER 2600

ONUGE

4 NM Holding Pattern

GP 3.00°
TCH 52

136°

316°

3000

2600

1.4 NM

4.8 NM

6 NM

316°

136°

3100

JARAS

↑

✴

*LNAV only.

1.4 NM to RW31

4.8 NM

6 NM

RW31

HOLER 2600

ONUGE

4 NM Holding Pattern

GP 3.00°
TCH 52

136°

316°

3000

2600

1.4 NM

4.8 NM

6 NM

316°

136°

3100

JARAS

↑

✴

*LNAV only.

1.4 NM to RW31

4.8 NM

6 NM

RW31

HOLER 2600

ONUGE

4 NM Holding Pattern

GP 3.00°
TCH 52

136°

316°

3000

2600

1.4 NM

4.8 NM

6 NM

316°

136°

3100

JARAS

↑

✴

*LNAV only.

1.4 NM to RW31

4.8 NM

6 NM

RW31

HOLER 2600

ONUGE

4 NM Holding Pattern

GP 3.00°
TCH 52

136°

316°

3000

2600

1.4 NM

4.8 NM

6 NM

316°

136°

3100

JARAS

↑

✴

*LNAV only.

1.4 NM to RW31

4.8 NM

6 NM

RW31

HOLER 2600

ONUGE

4 NM Holding Pattern

GP 3.00°
TCH 52

136°

316°

3000

2600

1.4 NM

4.8 NM

6 NM

316°

136°

3100

JARAS

↑

✴

*LNAV only.

1.4 NM to RW31

4.8 NM

6 NM

RW31

HOLER 2600

ONUGE

4 NM Holding Pattern

GP 3.00°
TCH 52

136°

316°

3000

2600

1.4 NM

4.8 NM

6 NM

316°

136°

3100

JARAS

↑

✴

*LNAV only.

1.4 NM to RW31

4.8 NM

6 NM

RW31

HOLER 2600

ONUGE

4 NM Holding Pattern

GP 3.00°
TCH 52

136°

316°

3000

2600

1.4 NM

4.8 NM

6 NM

316°

136°

3100

JARAS

↑

✴

*LNAV only.

1.4 NM to RW31

4.8 NM

6 NM

RW31

HOLER 2600

ONUGE

4 NM Holding Pattern

GP 3.00°
TCH 52

136°

316°

3000

2600

1.4 NM

4.8 NM

6 NM

316°

136°

3100

JARAS

↑

✴

*LNAV only.

1.4 NM to RW31

4.8 NM

6 NM

RW31

HOLER 2600

ONUGE

4 NM Holding Pattern

GP 3.00°
TCH 52

136°

316°

3000

2600

1.4 NM

4.8 NM

6 NM

316°

136°

3100

JARAS

↑

✴

*LNAV only.

1.4 NM to RW31

4.8 NM

6 NM

RW31

HOLER 2600

ONUGE

4 NM Holding Pattern

GP 3.00°
TCH 52

136°

316°

3000

2600

1.4 NM

4.8 NM

6 NM

316°

136°

3100

JARAS

↑

✴

*LNAV only.

1.4 NM to RW31

4.8 NM

6 NM

RW31

HOLER 2600

ONUGE

4 NM Holding Pattern

GP 3.00°
TCH 52

136°

316°

3000

2600

1.4 NM

4.8 NM

6 NM

316°

136°

3100

JARAS

↑

✴

*LNAV only.

1.4 NM to RW31

4.8 NM

6 NM

RW31

HOLER 2600

ONUGE

4 NM Holding Pattern

GP 3.00°
TCH 52