

WAAS CH 70613 W02B	APP CRS 021°	Rwy Ldg TDZE Apt Elev 7601 587 599
--	------------------------	--

RNAV (GPS) Y RWY 2C

NASHVILLE INTL (BNA)

RNP APCH - GPS.

▼

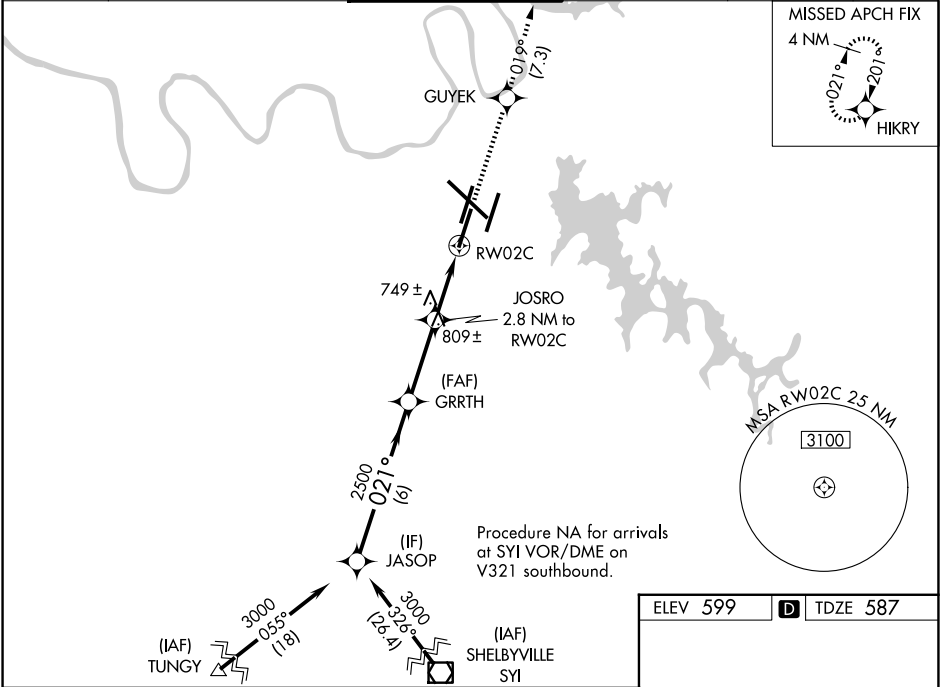
▲

For uncompensated Baro-VNAV systems, LNAV/VNAV NA below -11°C or above 54°C. Use of FD or AP providing RNAV track guidance required during simultaneous operations. LNAV procedure NA during simultaneous operations. Simultaneous approach authorized with Rwy 2R.
** RVR 1800 authorized with use of FD or AP or HUD to DA.

MALSR

MISSED APPROACH: Climb to 4000 direct GUYEK and on track 019° to HIKRY and hold, continue climb-in-hold to 4000.

D-ATIS 135.1	NASHVILLE APP CON 118.4 360.7 (030°-196°) 119.35 372.0 (197°-029°)	NASHVILLE TOWER 118.6 257.8	GND CON 121.9 348.6	CLNC DEL 126.05	CPDLC
------------------------	--	---------------------------------------	-------------------------------	---------------------------	-------



VGSI and RNAV glidepath not coincident.				4000	GUYEK	tr 019°	HIKRY
JASOP				2500	GRRTH	JOSRO 2.8 NM to RW02C	*LNAV only
GP 3.00° TCH 60				2500	*1520	*1.2 NM to RW02C	
6 NM				3.1 NM	1.6 NM	1.2 NM	
CATEGORY	A		B		C		D
LPV DA**	787/24		200 (200-½)				
LNAV/VNAV DA	1059/60		472 (500-1¼)				
LNAV MDA	1000/24 413 (500-½)		1000/40 413 (500-¾)				
CIRCLING	1100-1 501 (600-1)		1120-1 521 (600-1)		1200-1¾ 601 (700-1¾)		1380-2½ 781 (800-2½)

