

WAAS CH <b>49013</b> <b>W20D</b>	APP CRS <b>201°</b>	Rwy Ldg TDZE <b>551</b> Apt Elev <b>599</b>
--	------------------------	---

RNAV (GPS) Y RWY 20L

NASHVILLE INTL (BNA)

▼

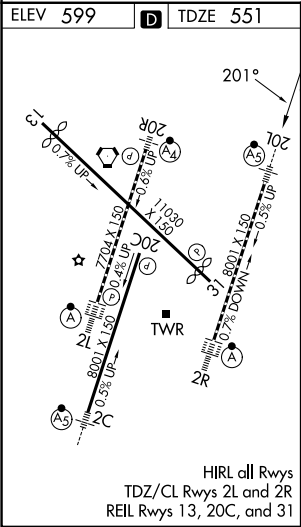
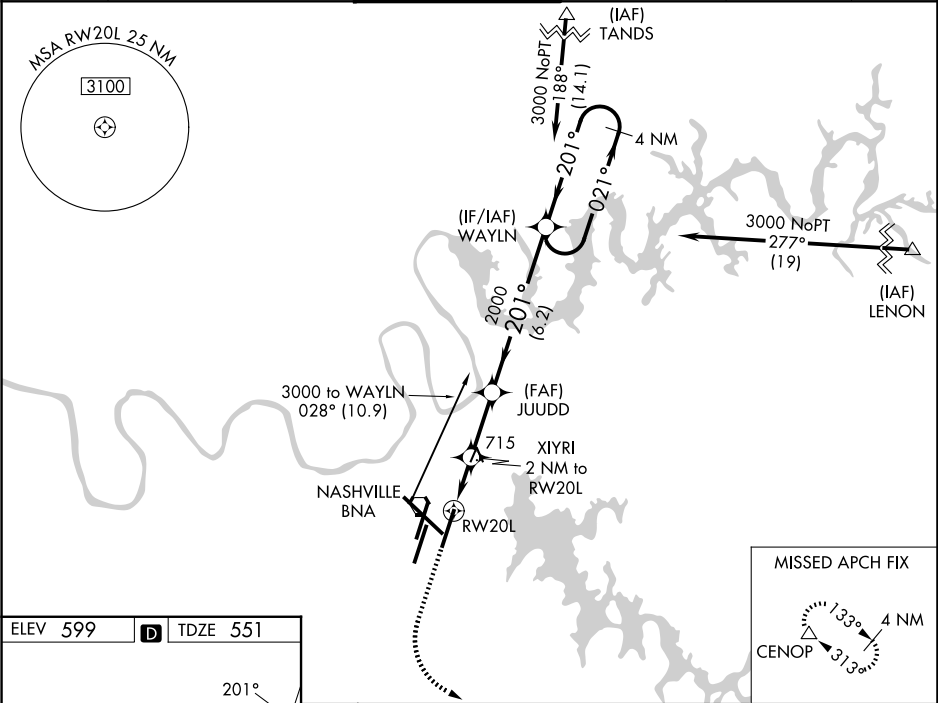
▲

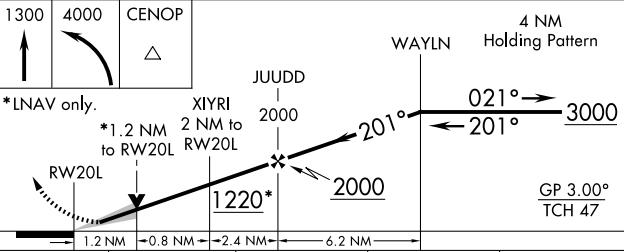
For uncompensated Baro-VNAV systems, procedure NA below -11°C (13°F) or above 54°C (130°F). DME/DME RNP-0.3 NA. Simultaneous approach authorized with Rwy 20R. LNAV procedure NA during simultaneous operations. Use of FD or AP providing RNAV track guidance required during simultaneous operations. For inop MALSR, increase LNAV/VNAV all Cats visibility to 1½. \*\* RVR 1800 authorized with use of FD or AP or HUD to DA.

MALSR

MISSED APPROACH:  
Climb to 1300 then climbing left turn to 4000 direct CENOP and hold.

D-ATIS <b>135.1</b>	NASHVILLE APP CON <b>118.4 360.7</b> (030°-196°) <b>119.35 372.0</b> (197°-029°)	NASHVILLE TOWER <b>118.6 257.8</b>	GND CON <b>121.9 348.6</b>	CLNC DEL <b>126.05</b>	CPDLC
------------------------	--	---------------------------------------	-------------------------------	---------------------------	-------



1300 ↑	4000 ↖	CENOP △				
*LNAV only.						
	*1.2 NM to RW20L	2 NM to RW20L	JUDD 2000	201°	021° → 3000	← 201°
	1.2 NM	0.8 NM	2.4 NM	6.2 NM		GP 3.00° TCH 47
CATEGORY	A		B	C	D	
LPV DA	** 751/24 200 (200-½)					
LNAV/VNAV DA	1025/58 474 (500-¼)					
LNAV MDA	980/24 429 (400-½)		980/40 429 (400-¾)			
CIRCLING	1100-1 501 (600-1)	1120-1 521 (600-1)	1200-1¾ 601 (700-1¾)	1380-2½ 781 (800-2½)		

SE-1, 07 AUG 2025 to 04 SEP 2025

SE-1, 07 AUG 2025 to 04 SEP 2025