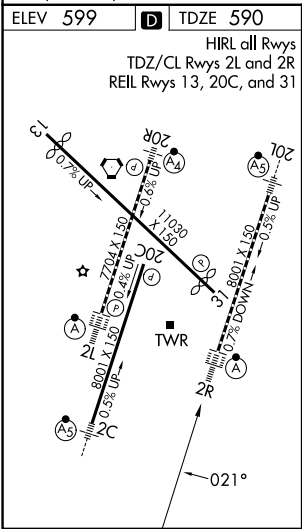
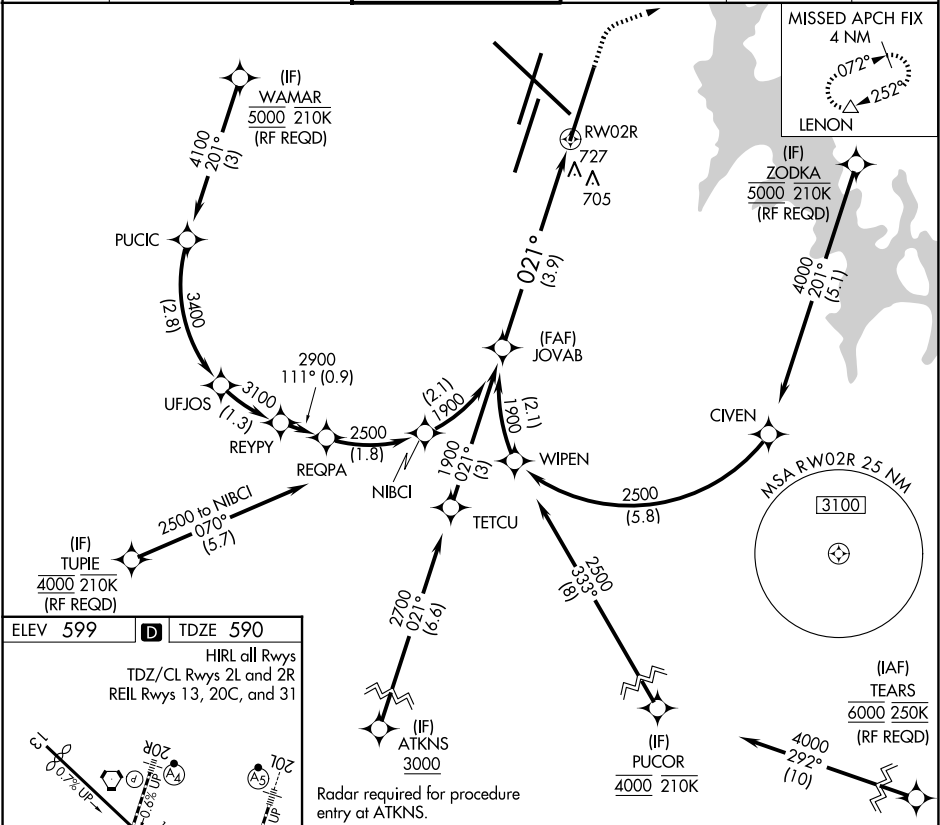


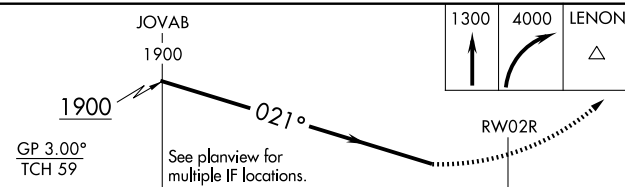
APP CRS	Rwy Ldg	8000
021°	TDZE	590
	Apt Elev	599

RNAV (RNP) Z RWY 2R

NASHVILLE INTL (BNA)

RNP AR APCH.		ALSIF-2		MISSED APPROACH:	
<div><div></div><div>For uncompensated Baro-VNAV systems, procedure NA below -11°C or above 54°C. For inoperative ALSIF-2, increase RNP 0.15 all Cats visibility to RVR 5600, RNP 0.30 all Cats visibility to 1 1/4 mile. Simultaneous approach authorized with Rwy 2L/C. Use of FD or AP providing RNAV track guidance required during simultaneous operations.</div></div>		<div><div></div><div></div></div>		Climb to 1300 then climbing right turn to 4000 direct LENON and hold.	
D-ATIS	NASHVILLE APP CON	NASHVILLE TOWER	GND CON	CINC DEL	CPDLC
135.1	118.4 360.7 (030°-196°) 119.35 372.0 (197°-029°)	118.6 257.8	121.9 348.6	126.05	



 <p>JOVAB 1900</p> <p>1900</p> <p>021°</p> <p>GP 3.00° TCH 59</p> <p>See planview for multiple IF locations.</p> <p>3.9 NM</p> <p>RW02R</p> <p>1300 ↑</p> <p>4000 ↷</p> <p>LENON △</p>				
CATEGORY	A	B	C	D
RNP 0.15 DA		938/40	348 (400-¾)	
RNP 0.30 DA		1024/48	434 (500-1)	
AUTHORIZATION REQUIRED				

SE-1, 07 AUG 2025 to 04 SEP 2025

SE-1, 07 AUG 2025 to 04 SEP 2025