

APP CRS	Rwy Ldg	7702
021°	TDZE	599
	Apt Elev	599

RNAV (RNP) Z RWY 2L

NASHVILLE INTL (BNA)

▼

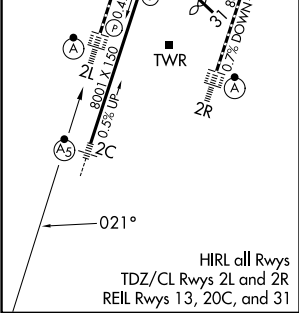
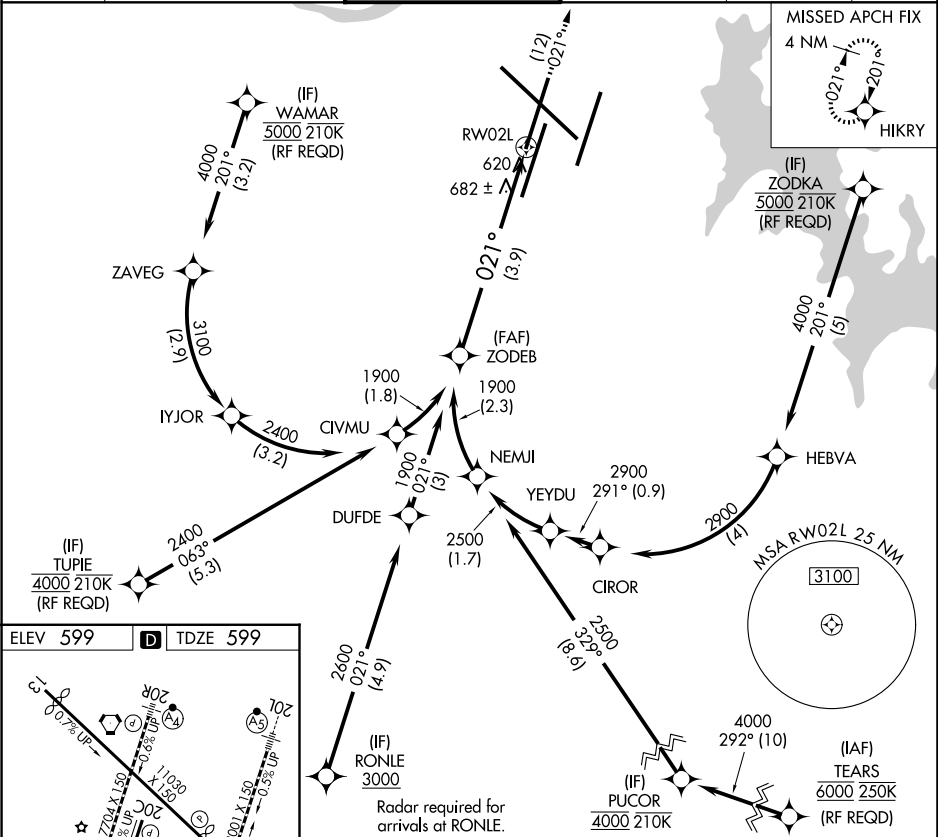
For uncompensated Baro-VNAV systems, procedure NA below -11°C (13°F) or above 54°C (130°F). GPS required. Simultaneous approach authorized with Rwy 2R. For inop ALSF-2, increase RNP 0.15 all Cats visibility to RVR 4700, increase RNP 0.30 all Cats visibility to 1 ¼ mile. Use of FD or AP providing RNAV track guidance required during simultaneous operations.


ALSF-2

MISSED APPROACH:

Climb to 4000 on track 021° to HIKRY and hold, continue climb-in-hold to 4000.

D-ATIS	NASHVILLE APP CON	NASHVILLE TOWER	GND CON	CLNC DEL	CPDLC
135.1	118.4 360.7 (030°-196°) 119.35 372.0 (197°-029°)	118.6 257.8	121.9 348.6	126.05	



<p>ZODEB</p> <p>1900</p> <p>1900 ↗</p> <p>GP 3.00°</p> <p>TCH 55</p>				<p>See planview for multiple IF locations.</p>		<p>4000</p> <p>↑</p>	<p>tr 021°</p>	<p>HIKRY</p> 
<p>021°</p> <p>3.9 NM</p> <p>RW02L</p>								
CATEGORY	A	B	C	D				
RNP 0.15 DA	898/24		299 (300-½)					
RNP 0.30 DA	991/41		392 (400-¾)					
<p>AUTHORIZATION REQUIRED</p>								