

RNAV (RNP) Z RWY 2C
NASHVILLE INTL (BNA)

NASHVILLE INTL (BNA)

APP CRS 021°	Rwy Ldg TDZE Apt Elev	7601 587 599
------------------------	-----------------------------	---

RNP AR APCH - GPS.

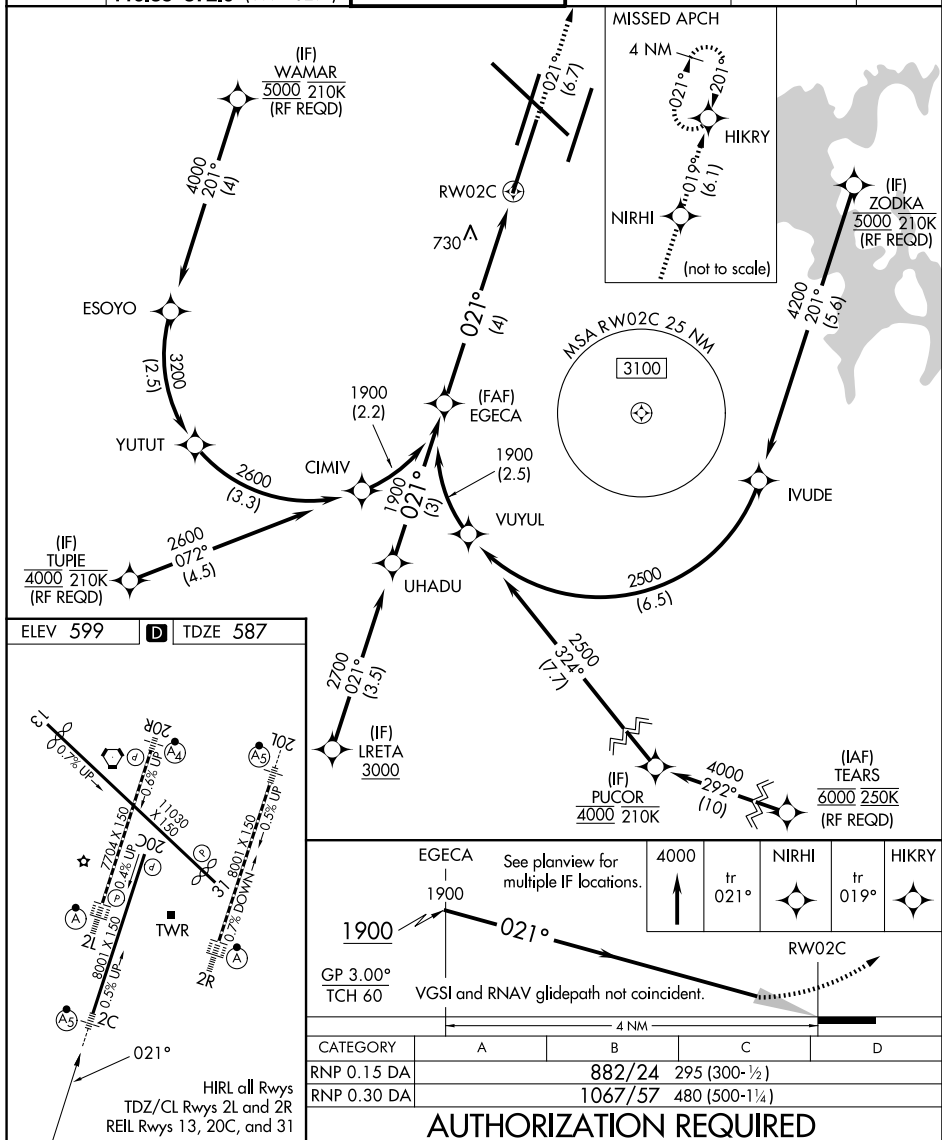
T For uncompensated Baro-VNAV systems, procedure NA below -11°C or above 54°C. Simultaneous approach authorized with Rwy 2R. Use of FD or AP providing RNAV track guidance required during simultaneous operations. For inop MALS, increase RNP 0.30 visibility to 1 $\frac{1}{8}$ mile.

MALSR



MISSED APPROACH: Climb to 4000 on track 021° to NIRHI and on track 019° to HIKRY and hold, continue climb-in-hold to 4000.

D-ATIS 135.1	NASHVILLE APP CON 118.4 360.7 (030°-196°) 119.35 372.0 (197°-029°)	NASHVILLE TOWER 118.6 257.8	GND CON 121.9 348.6	CLNC DEL 126.05	CPDLC
-----------------	--	--------------------------------	------------------------	--------------------	-------



NASHVILLE, TENNESSEE

Amdt 2C 07OCT21

NASHVILLE INTL (RNA)

36°07'N-86°41'W

RNAV (RNP) Z RWY 2C

SE-1, 07 AUG 2025 to 04 SEP 2025