

APP CRS	Rwy Ldg	7702
201°	TDZE	578
	Apt Elev	599

RNAV (RNP) Z RWY 20R

NASHVILLE INTL (BNA)

T GPS required. Simultaneous approach authorized with Rwy 20L. Use of FD or AP providing RNAV track guidance required during simultaneous operations. For uncompensated Baro-VNAV systems, procedure NA below -11°C (13°F) or above 54°C (130°F). For inoperative MALSF, increase RNP 0.18 all Cats visibility to RVR 5600 and RNP 0.30 all Cats visibility to 1½.

MALSF



MISSED APPROACH:
Climb to 3000 on track
201° to RONLE and hold.

D-ATIS
135.1

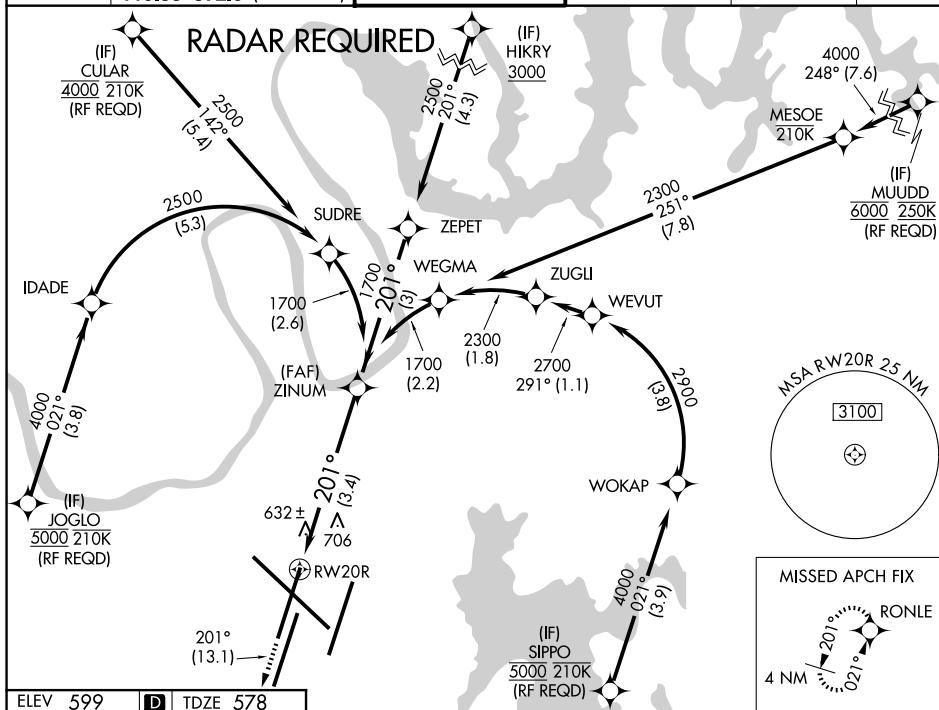
NASHVILLE APP CON
118.4 360.7 (030°-196°)
118.25 372.0 (107°-000°)

NASHVILLE TOWER
118.6 257.8

GND CON
121.9 348.6

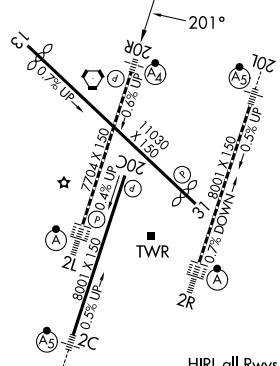
CLNC DEL
126.05

CPDLC




ELEV 599

D TDZE .578

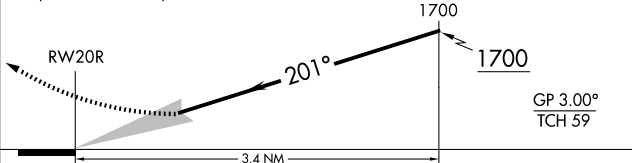


HIRL all Rwy's
TDZ/CL Rwy's 2L and 2R
REIL Rwy's 13, 20C, and 31

3000	tr 201°	RONLE 
------	------------	--

VGSI and RNAV glidepath not coincident
(VGSI Angle 3.00/TCH 79).

See planview for multiple IF locations.



CATEGORY	A	B	C	D
RNP 0.18 DA		927/42	349 (400-7%)	
RNP 0.30 DA		1042/60	464 (500-1¼%)	

AUTHORIZATION REQUIRED