

APP CRS	Rwy Ldg	8001
201°	TDZE	588
	Apt Elev	599

RNAV (GPS) RWY 20C

NASHVILLE INTL (BNA)

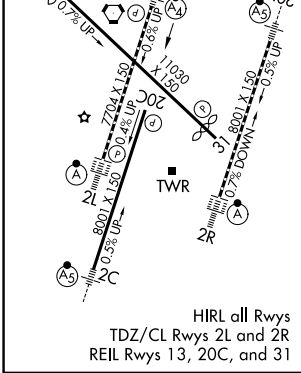
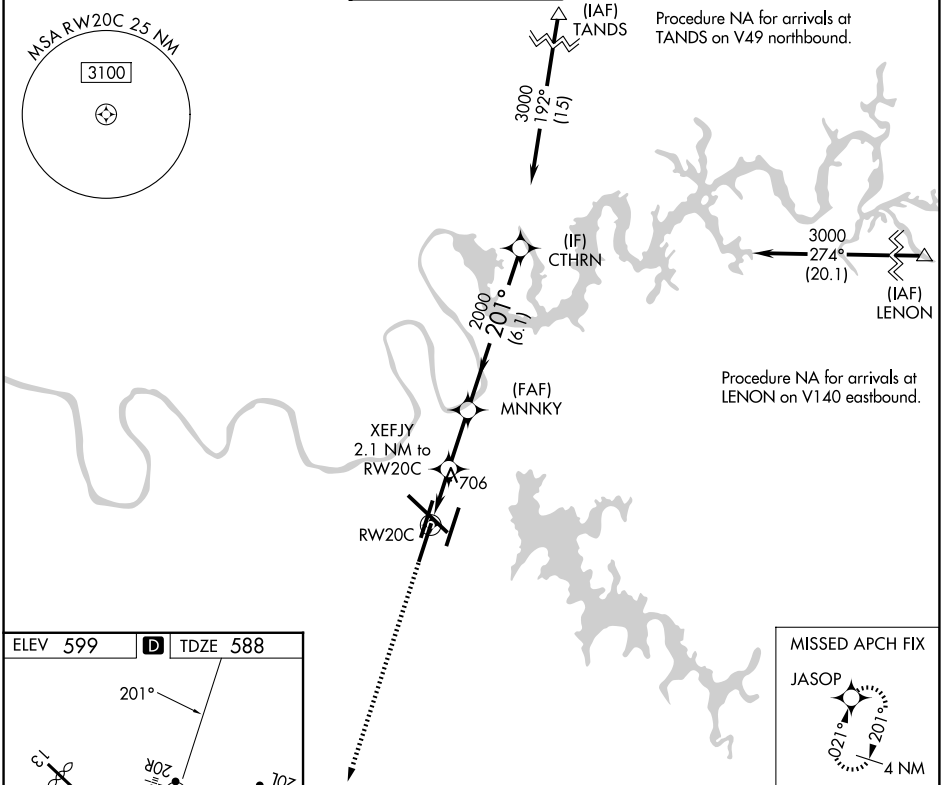
▽

▲

DME/DME RNP-0.3 NA.
Helicopter visibility reduction below ¾ SM NA.

MISSED APPROACH: Climb to 3000 direct JASOP and hold.

D-ATIS	NASHVILLE APP CON	NASHVILLE TOWER	GND CON	CLNC DEL	CPDLC
135.1	118.4 360.7 (030°-196°) 119.35 372.0 (197°-029°)	118.6 257.8	121.9 348.6	126.05	



<div><div>3000</div><div></div></div>		VGSI and descent angles not coincident (VGSI Angle 3.00/TCH 68).		<div>CTHRN</div>	
<div><div>XEJFY</div><div>2.1 NM to RW20C</div></div>		<div><div>MNNKY</div><div><div><div><div><div>3.00°</div><div>TCH 50</div></div></div><div><div>201°</div><div>3000</div></div></div></div></div>			
<div><div><div><div><div>1 NM to RW20C</div><div></div></div></div><div><div><div><div>1 NM</div><div>1.1 NM</div></div></div><div><div><div><div>2.2 NM</div><div>1280</div></div></div><div><div><div><div>6.1 NM</div><div>2000</div></div></div></div></div></div></div></div>					
CATEGORY	A		B	C	D
LNAV MDA	960-1 372 (400-1)		960-1⅛ 372 (400-1⅛)		
CIRCLING	1100-1 501 (600-1)	1120-1 521 (600-1)	1200-1⅜ 601 (700-1¾)	1380-2½ 781 (800-2½)	

SE-1, 07 AUG 2025 to 04 SEP 2025

SE-1, 07 AUG 2025 to 04 SEP 2025