

ILS or LOC/DME RWY 2R  
NASHVILLE INTL (BNA)

**MISSED APPROACH:** Climb to 1300 then climbing right turn to 3000 on BNA R-072 to LENON/BNA 25.1 DME and hold.

NASHVILLE

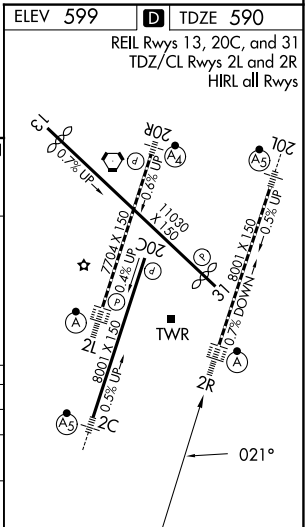
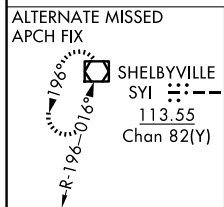
114.1 BNA  
Chan 88

072°  
252°

R-072

MISSED APCH FIX

LENON  
BNA 25.1



SE-1, 07 AUG 2025 to 04 SEP 2025