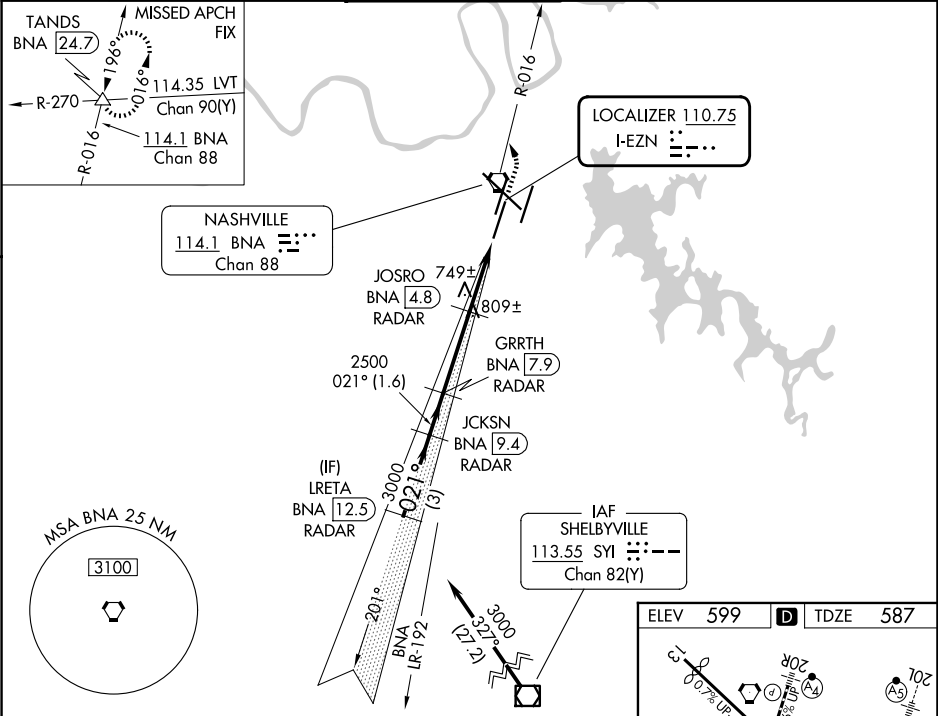


LOC I-EZN 110.75	APP CRS 021°	Rwy Ldg TDZE Apt Elev	7601 587 599
----------------------------	------------------------	-----------------------------	---

ILS or LOC RWY 2C

NASHVILLE INTL (BNA)

DME or RADAR required.			MALSR	MISSED APPROACH: Climb to 1300 then climbing left turn to 4000 on BNA VORTAC R-016 to TANDS INT/BNA 24.7 and hold.	
Simultaneous approach authorized. For inop ALS, increase S-LOC 2C Cats C and D visibility to RVR 6000. DME from BNA VORTAC. Simultaneous reception of I-EZN and BNA DME required. #RVR 1800 authorized with the use of FD or AP or HUD to DA.					
D-ATIS 135.1	NASHVILLE APP CON 118.4 360.7 (030°-196°) 119.35 372.0 (197°-029°)	NASHVILLE TOWER 118.6 257.8	GND CON 121.9 348.6	CLNC DEL 126.05	CPDLC



VGSI and ILS glidepath not coincident.					
LRETA BNA 12.5 RADAR		JCKSN BNA 9.4 RADAR	GRTH BNA 7.9 RADAR	JOSRO BNA 4.8 RADAR	TANDS △
3000		2500	2500	1520	
GS 3.00° TCH 60					
3 NM		1.6 NM	3.1 NM	1.6 NM	1.2 NM
CATEGORY	A	B	C	D	
S-ILS 2C #	787/24		200 (200-½)		
S-LOC 2C	1000/24	413 (500-½)	1000/40	413 (500-¾)	
CIRCLING	1100-1 501 (600-1)	1120-1 521 (600-1)	1200-1¾ 601 (700-1¾)	1380-2½ 781 (800-2½)	

