

ILS RWY 2R (CAT II & III)
NASHVILLE INTL (BNA)

MISSED APPROACH: Climb to 1300 then climbing right turn to 3000 on BNA R-072 to LENON/BNA 25.1 DME and hold.

ALTERNATE MISSED
APCH FIX

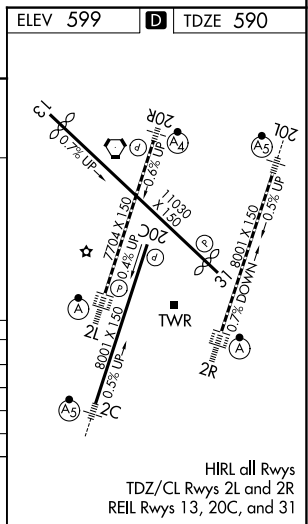
196
196
R-196-016

SHELBYVILLE
SYI
113.55
Chan 82(Y)

The radar display shows a target aircraft at a range of 690 miles and a heading of 1208 degrees. The target is identified as IM. Other radar returns are labeled with call signs and ranges: ATKNS INT (I-UQU) at 15 miles, LOUDN (I-UQU) at 12 miles, UNIVE (I-UQU) at 8.8 miles, SKAGS (I-UQU) at 7.3 miles, and IM at 690 miles. A scale bar at the bottom indicates distances from 0.1 NM to 3.2 NM.

CATEGORY	A	B	C	D
S-ILS 2R		CAT II	RA 116/12	100 DA 690
S-ILS 2R		CAT III _a	RVR 07	
S-ILS 2R		CAT III _b	RVR 06	
S-ILS 2R		CAT III _c	NA	

CATEGORY II & III ILS - SPECIAL AIRCREW
& AIRCRAFT CERTIFICATION REQUIRED



SE-1, 07 AUG 2025 to 04 SEP 2025