

LOC/DME I-MYR 109.5 Chan 32	APP CRS 177°	Rwy Ldg 9503 TDZE 23 Apt Elev 25
---	------------------------	---

ILS or LOC RWY 18
MYRTLE BEACH INTL (MYR)

DME required.

T For inop ALS, increase S-ILS 18 Cat E visibility to RVR 4000 and S-LOC 18 Cats C/D/E visibility to RVR 5500.

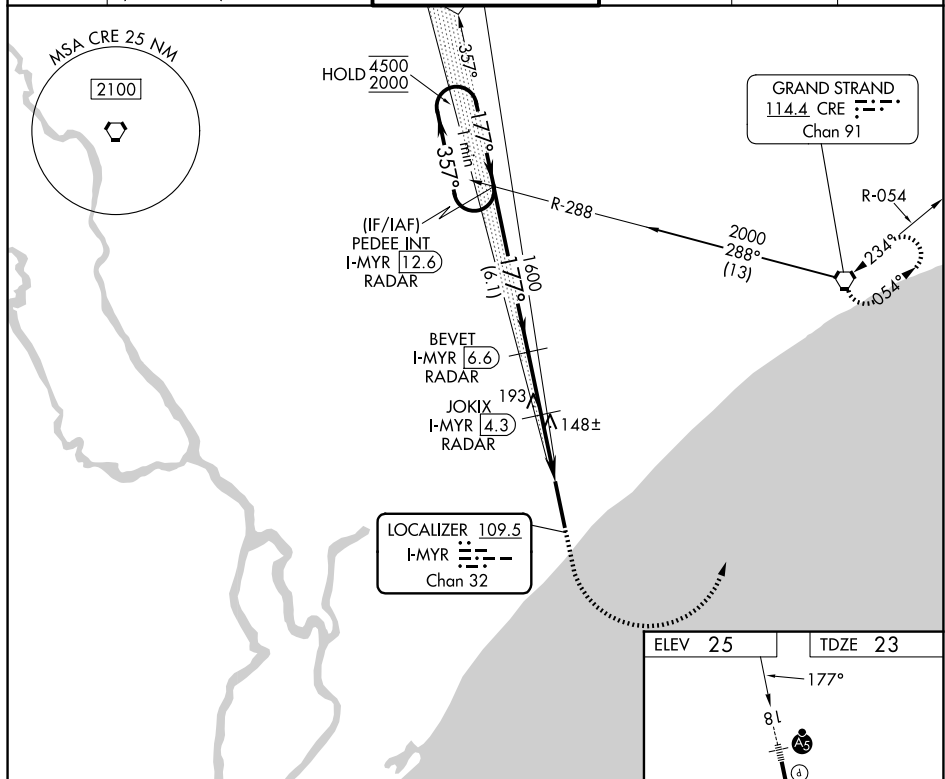
A *RVR 1800 authorized with use of FD or AP or HUD to DA.

MALSR



MISSED APPROACH: Climb to 1700 then climbing left turn to 3000 direct CRE VORTAC and hold.

ATIS 123.925	MYRTLE BEACH APP CON ★ (171° - 321°) 127.4 257.95 (322° - 170°) 119.2 350.3	MYRTLE BEACH TOWER ★ 128.45 (CTAF) 0 259.3	GND CON 120.3 275.8	CLNC DEL 120.3	UNICOM 122.95
------------------------	---	--	-------------------------------	--------------------------	-------------------------



SE-2, 07 AUG 2025 to 04 SEP 2025

One Minute Holding Pattern

VGSI and ILS glidepath not coincident (VGSI Angle 3.00/TCH 64).

PEDEE INT I-MYR 12.6 RADAR

BEVET I-MYR 6.6 RADAR

JOKIX I-MYR 4.3 RADAR

I-MYR 2.8 I-MYR 1.8

4500 2000

357° 177°

GS 3.00° TCH 52

1600 860

6.1 NM 2.3 NM 1.5 NM 1 NM

TWR

9503 X 150

36

CATEGORY	A	B	C	D	E
S-ILS 18 *	223/24 200 (200-½)				
S-LOC 18	400/24	377 (400-½)	400/35 377 (400-¾)		
CIRCLING	560-1	535 (600-1)	700-2 675 (700-2)	700-2¼ 675 (700-2¼)	700-2½ 675 (700-2½)

HIRL Rwy 18-36

MYRTLE BEACH, SOUTH CAROLINA

Amdt 6A 21MAR24

33°41'N-78°56'W

MYRTLE BEACH INTL (MYR)

ILS or LOC RWY 18