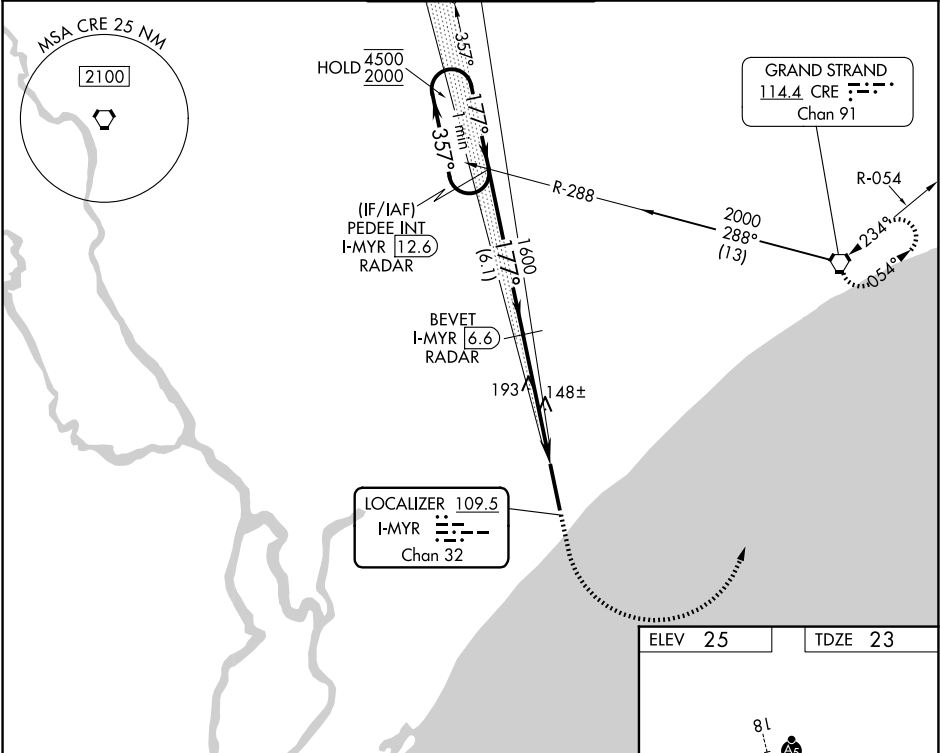


LOC/DME I-MYR 109.5 Chan 32	APP CRS 177°	Rwy Ldg TDZE 23 Apt Elev 25	ILS RWY 18 (SA CAT I & II) MYRTLE BEACH INTL (MYR)	
---	------------------------	---	---	--

DME required.		MALSR	MISSED APPROACH: Climb to 1700 then climbing left turn to 3000 direct CRE VORTAC and hold.		
SA CAT I/II: Requires specific OPSPEC, MSPEC, or LOA approval.			ATIS 123.925	MYRTLE BEACH APP CON ★ (171° - 321°) 127.4 257.95 (322° - 170°) 119.2 350.3	MYRTLE BEACH TOWER ★ 128.45 (CTAF) 0 259.3
			GND CON 120.3 275.8	CLNC DEL 120.3	UNICOM 122.95



One Minute Holding Pattern

VGSI and ILS glidepath not coincident (VGSI Angle 3.00/TCH 64).

PEDEE INT I-MYR 12.6 RADAR

BEVET I-MYR 6.6 RADAR

4500 ← 357°

2000 → 177°

177°

1600

GS 3.00° TCH 52

6.1 NM

4.8 NM

934'

1700

3000

CRE

CATEGORY	A	B	C	D
S-ILS 18	SA CAT I RA 156/14	150	DA 173	
S-ILS 18	SA CAT II RA 101/12	100	DA 123	

SA CATEGORY I & II SPECIAL AIRCREW & AIRCRAFT CERTIFICATION REQUIRED

ELEV 25

TDZE 23

HIRL Rwy 18-36

81

45

4

TWR

9503 X 150

36

42

☆