

WAAS CH 56618 W06A	APP CRS 060°	Rwy Ldg TDZE 623 Apt Elev 629
--	------------------------	---

RNAV (GPS) RWY 6

MUSKEGON COUNTY (MKG)

RNP APCH.

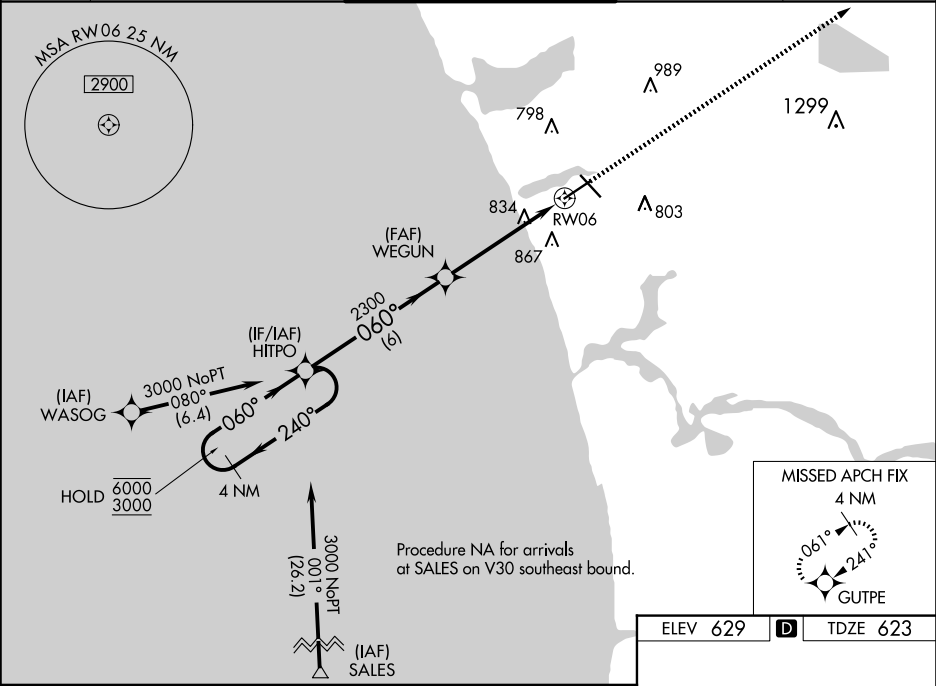
▼

▲

Rwy 6 helicopter visibility reduction below ¾ SM NA. For uncompensated Baro-VNAV systems, LNAV/VNAV NA below -18°C or above 54°C.

MISSED APPROACH: Climb to 3000 direct GUTPE and hold.

ATIS 124.3	GREAT LAKES APP CON★ 119.8 290.35 (North) 133.825 290.35 (South)	MUSKEGON TOWER★ 126.25 (CTAF) 0 343.725	GND CON 121.6	UNICOM 122.95
----------------------	--	--	-------------------------	-------------------------



4 NM Holding Pattern

HITPO

3000 GUTPE

GP 3.00° TCH 45°

WEGUN 2300

*1.4 NM to RWY 6

RWY 6

6 NM 3.7 NM 1.4 NM

CATEGORY	A	B	C	D
LPV DA	928-7⁄8 305 (300-7⁄8)			
LNAV/VNAV DA	975-1 352 (400-1)			
LNAV MDA	1100-1 477 (500-1)		1100-13⁄8 477 (500-13⁄8)	
CIRCLING	1100-1 471 (500-1)	1180-1 551 (600-1)	1200-1½ 571 (600-1½)	1200-2 571 (600-2)

REIL Rwy 6

REIL Rwy 14

HIRL Rwy 6-24

HIRL Rwy 14-32