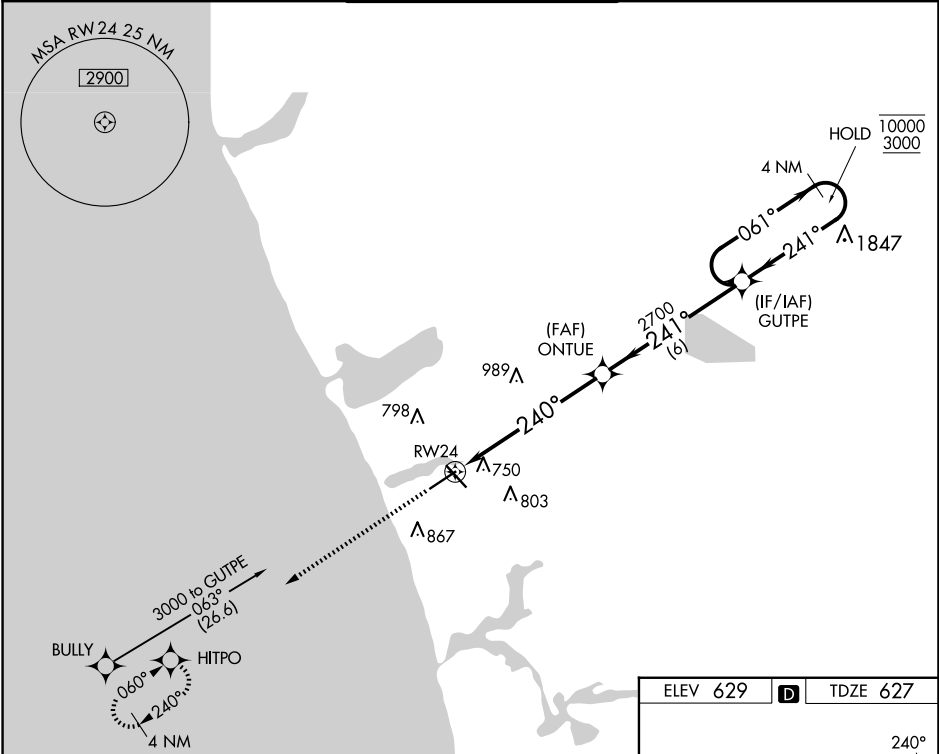


WAAS CH 42918 W24A	APP CRS 240°	Rwy Ldg TDZE Apt Elev	6500 627 629
--	------------------------	-----------------------------	---

RNAV (GPS) RWY 24
MUSKEGON COUNTY (MKG)

RNP APCH. For uncompensated Baro-VNAV systems, LNAV/VNAV NA below -18°C or above 54°C. For inop ALS, increase LPV visibility all Cats to ¾ SM, LNAV/VNAV visibility all Cats to 1 ¾ SM, LNAV Cats A/B to 1 SM and LNAV Cats C/D to 1 ¾ SM.		MALSRR AS	MISSED APPROACH: Climb to 3000 direct HITPO and hold.	
ATIS 124.3	GREAT LAKES APP CON★ 119.8 290.35 (North) 133.825 290.35 (South)	MUSKEGON TOWER★ 126.25 (CTAF) 0 343.725	GND CON 121.6	UNICOM 122.95



3000	HITPO	*LNAV only	ONTUE	GUTPE	4 NM Holding Pattern
↑	★		2700	241°	10000
		* 1.2 NM to RW24	2700	241°	3000
			240°	2700	GP 3.00°
					TCH 56
CATEGORY	A	B	C	D	
LPV DA		827-½	200 (200-½)		
LNAV/VNAV DA		1092-1	465 (500-1)		
LNAV MDA	1080-½	453 (500-½)	1080-¾	453 (500-¾)	
CIRCLING	1080-1	1180-1	1200-1½	1200-2	
	451 (500-1)	551 (600-1)	571 (600-1½)	571 (600-2)	

