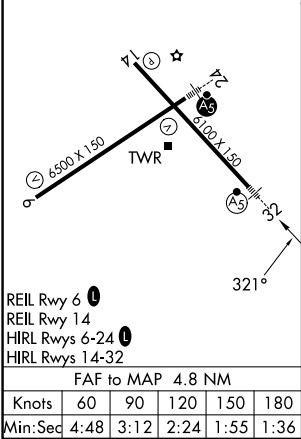
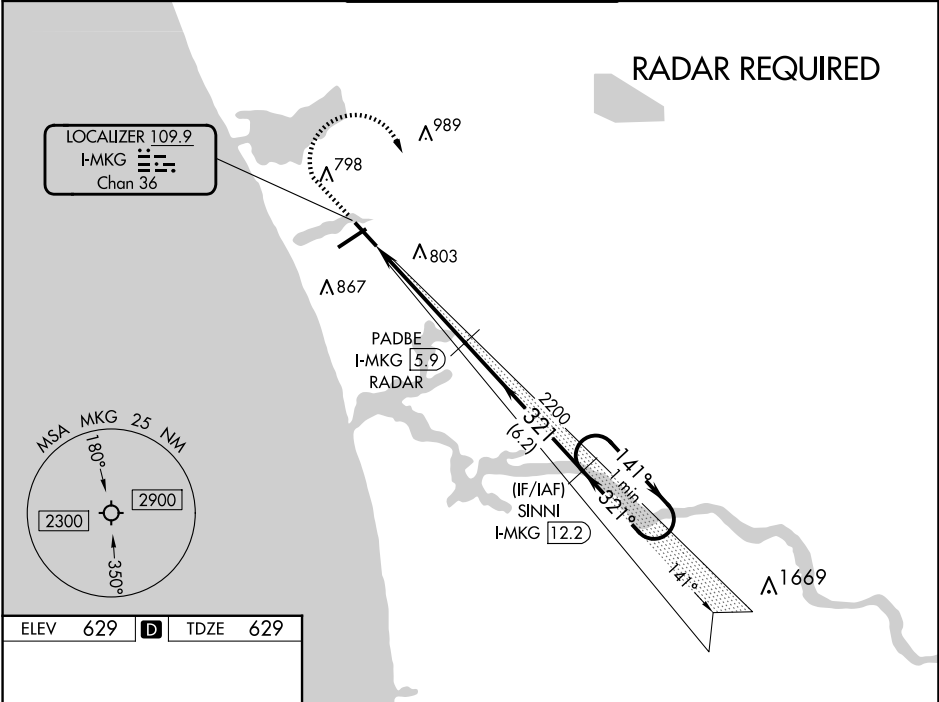


LOC/DME I-MKG	APP CRS	Rwy Ldg
<b>109.9</b>	<b>321°</b>	<b>6100</b>
Chan <b>36</b>		TDZE <b>629</b>
		Apt Elev <b>629</b>

ILS or LOC RWY 32  
MUSKEGON COUNTY (MKG)

DME or RADAR required. RNAV 1-GPS required.	MALSR	MISSED APPROACH: Climb to 2500 then climbing right turn to 3000 direct SINNI and hold.
 For inop ALS, increase S-LOC Cat C/D visibility to 1 3/8 SM. ** RVR 1800 authorized with use of FD or AP or HUD to DA.		

ATIS <b>124.3</b>	GREAT LAKES APP CON ★ <b>119.8 290.35</b> (North) <b>133.825 290.35</b> (South)	MUSKEGON TOWER ★ <b>126.25</b> (CTAF) <b>343.725</b>	GND CON <b>121.6</b>	UNICOM <b>122.95</b>
----------------------	---	---	-------------------------	-------------------------



ELEV <b>629</b> TDZE <b>629</b>	2500	3000	SINNI I-MKG <b>12.2</b>	One Minute Holding Pattern
	*LOC only	*I-MKG <b>2.5</b>	PADBE I-MKG <b>5.9</b> RADAR	SINNI I-MKG <b>12.2</b>
REIL Rwy 6 REIL Rwy 14 HIRL Rwys 6-24 HIRL Rwys 14-32				
FAF to MAP 4.8 NM	2200	2200	2200	2200
Knots 60 90 120 150 180	1.4 NM	3.4 NM	6.2 NM	
Min:Sec 4:48 3:12 2:24 1:55 1:36	CATEGORY A	B	C	D
CIRCLING	S-ILS 32 **	829/24 200 (200-1/2)		
	S-LOC 32	1120/24 491 (500-1/2)	1120/50 491 (500-1)	
		1120-1 491 (500-1)	1180-1 551 (600-1)	1200-1 571 (600-1 1/2)
				1200-2 571 (600-2)