

23222

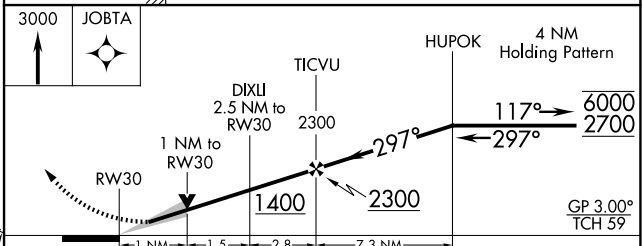
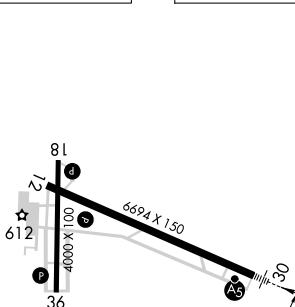
RNAV (GPS) RWY 30
NORTHWEST ALABAMA RGNL (MSL)


MALSR

A5



MISSED APPROACH:
Climb to 3000 direct
JOBTA and hold.

UNICOM
123.05 (CTAF) **L**

CATEGORY		A	B	C	D
LPV	DA	751- $\frac{1}{2}$		200 (200- $\frac{1}{2}$)	
INAV/ VNAV	DA	962- $\frac{3}{4}$		411 (500- $\frac{3}{4}$)	
INAV	MDA	940- $\frac{1}{2}$ 389 (400- $\frac{1}{2}$)		940- $\frac{5}{8}$ 389 (400- $\frac{5}{8}$)	
 CIRCLING		1040-1 489 (500-1)		1280-2 729 (800-2)	1280-2 $\frac{1}{4}$ 729 (800-2 $\frac{1}{4}$)

NORTHWEST ALABAMA RGNL (MSL)
RNAV (GPS) RWY 30