

WAAS  
CH **56435**  
**W18A**

APP CRS  
**184°**

Rwy Idg **4000**  
TDZE **547**  
Apt Elev **551**

**RNAV (GPS) RWY 18**

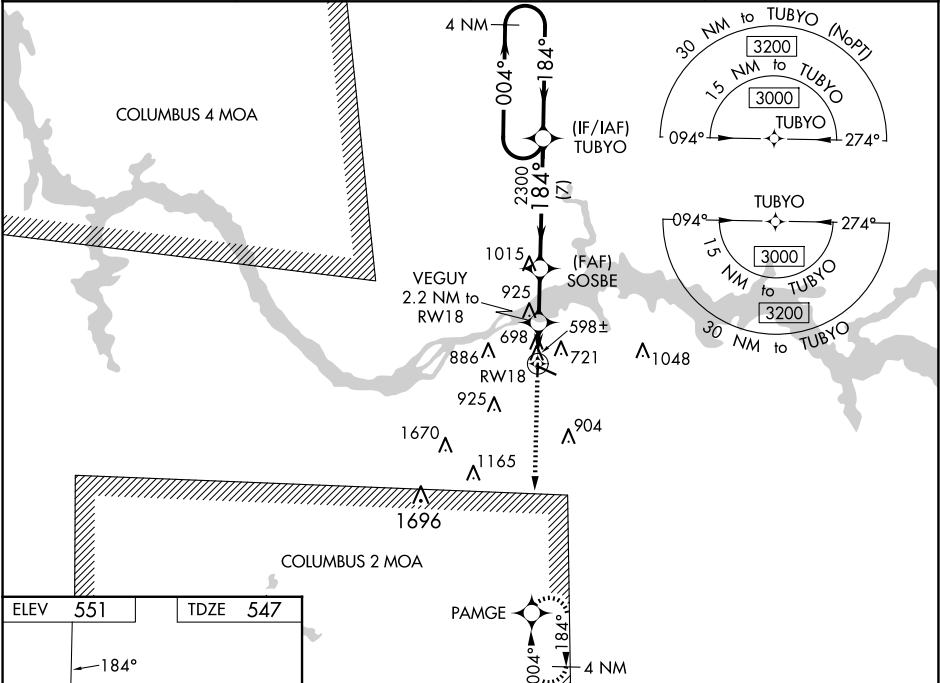
NORTHWEST ALABAMA RGNL (MSL)

RNP APCH.

Baro-VNAV NA when using Decatur altimeter setting. For uncompensated Baro-VNAV systems, LNAV/VNAV NA below -4°C (25°F) or above 54°C (130°F). Rwy 18 helicopter visibility reduction below ¾ SM NA. When local altimeter setting not received, use Decatur altimeter setting and increase LPV DA to 880, LNAV/VNAV DA to 1065 and all MDA 100 feet, increase LNAV Cat C visibility ¼ SM, increase Circling Cat C visibility ½ SM.

MISSED APPROACH:  
Climb to 3000 direct PAMGE and hold.

ASOS <b>119.425</b>	MEMPHIS CENTER <b>120.8 307.0</b>	GCO <b>121.725</b>	UNICOM <b>123.05 (CTAF) 0</b>
------------------------	--------------------------------------	-----------------------	----------------------------------



ELEV **551** TDZE **547**

184°

81  
12  
612  
36

6694 X 150

4000 X 150

30

3000 PAMGE

VGSI and RNAV glidepath not coincident (VGSI Angle 3.00/TCH 35).

\*LNAV only.

VEGUY 2.2 NM to RW18

SOSBE 2300

TUBYO 4 NM Holding Pattern

GP 3.15° TCH 57

1320\*

2300

2.2 NM 2.9 NM 7 NM

CATEGORY	A	B	C	D
LPV DA	797-1	250 (300-1)		NA
LNAV/VNAV DA	982-1⅓	435 (500-1⅓)		NA
LNAV MDA	960-1	413 (500-1)	960-1¼ 413 (500-1¼)	NA
CIRCLING	1040-1	489 (500-1)	1280-2 729 (800-2)	NA