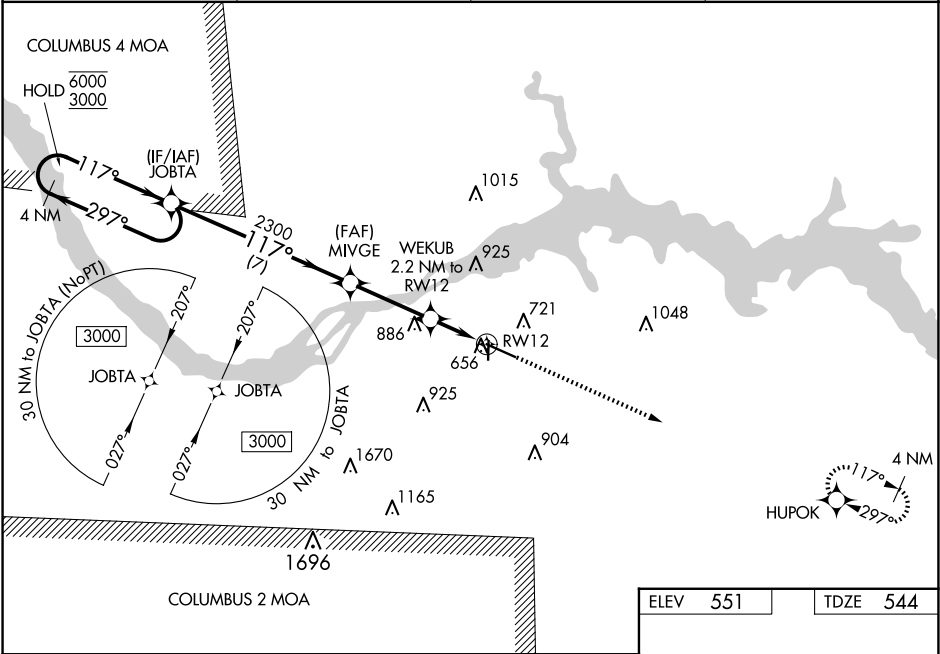


WAAS CH 90518 W12A	APP CRS 117°	Rwy Idg 6694 TDZE 544 Apt Elev 551
--	------------------------	---

RNAV (GPS) RWY 12
NORTHWEST ALABAMA RGNL (MSL)

RNP APCH. ▼ Rwy 12 helicopter visibility reduction below ¾ SM NA. For uncompensated Baro-VNAV systems, LNAV/VNAV NA below -4°C or above 54°C. When local altimeter setting not received use Decatur altimeter setting and increase LPV DA to 934 feet, LNAV/VNAV DA to 1025 feet and all MDA 100 feet; increase LPV all Cats visibility ¼ SM, LNAV/VNAV all Cats visibility ⅓ SM, LNAV Cat C and D visibility ⅓ SM and Circling Cat C and D visibility ½ SM. Baro-VNAV and VDP NA when using Decatur altimeter setting.	MISSED APPROACH: Climb to 2700 direct HUPOK and hold.
--	--

ASOS 119.425	MEMPHIS CENTER 120.8 307.0	GCO 121.725	UNICOM 123.05 (CTAF) 0
------------------------	--------------------------------------	-----------------------	----------------------------------



4 NM Holding Pattern		JOBTA	MIVGE	WEKUB	RWY 12
6000 3000		2300	2300	2.2 NM to RWY 12	
GP 3.00° TCH 56				*1 NM to RWY 12	
		7 NM	3.1 NM	1.2 NM	1 NM
CATEGORY	A	B	C	D	
LPV DA		851-1	307 (300-1)		
LNAV/VNAV DA		942-1¼	398 (400-1¼)		
LNAV MDA		920-1	376 (400-1)		
CIRCLING	1040-1	489 (500-1)	1280-2 729 (800-2)	1280-2¼ 729 (800-2¼)	

ELEV 551	TDZE 544
2700 HUPOK	
*LNAV only.	
117°	
81	
612	
36	
4000 X 100	
6694 X 150	
REIL Rwy 12 0	
MIRL Rwy 18-36 0	
HIRL Rwy 12-30 0	

SE-4, 07 AUG 2025 to 04 SEP 2025

SE-4, 07 AUG 2025 to 04 SEP 2025