

LOC I-MSL <u>109.7</u>	APP CRS 297°	Rwy Idg 6694 TDZE 551 Apt Elev 551
----------------------------------	------------------------	---

ILS Y or LOC Y RWY 30
NORTHWEST ALABAMA RGNL (MSL)

RNAV 1 - GPS.	
---------------	--

DME required.

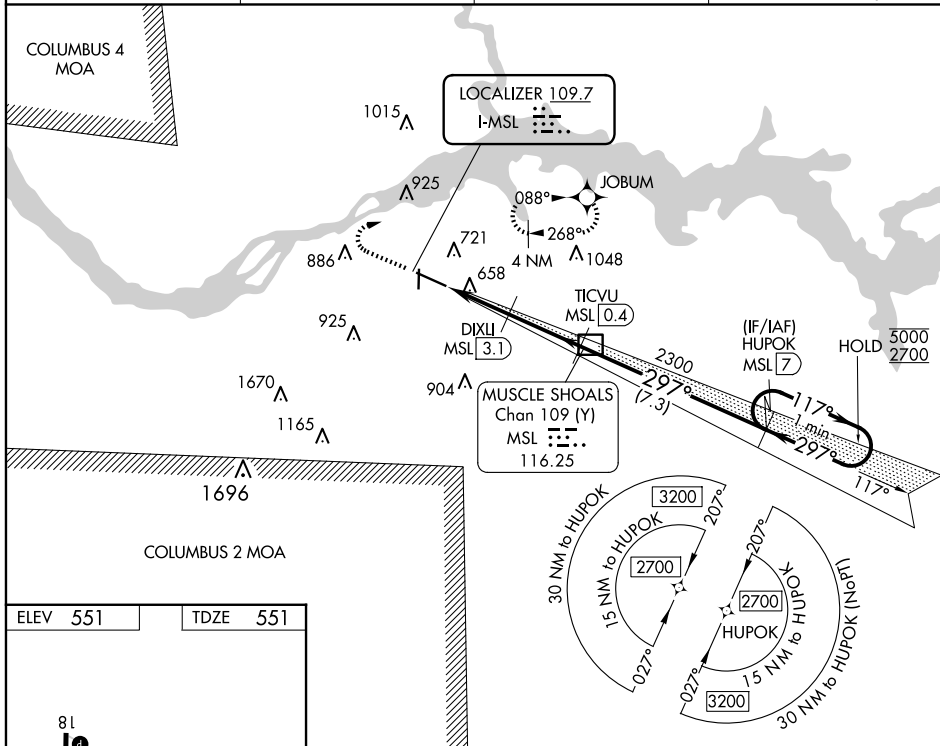


DME from MSL DME. Simultaneous reception of I-MSL and MSL DME required.
For inop ALS increase S-LOC 30 Cats C/D visibility to 1 SM.



MISSED APPROACH: Climb to 1200 then climbing right turn to 3000 direct JOBUM and hold, continue climb-in-hold to 3000.

ASOS 119.425	MEMPHIS CENTER 120.8 307.0	GCO 121.725	UNICOM 123.05 (CTAF) 0
------------------------	--------------------------------------	-----------------------	----------------------------------



REIL Rwy 12
MIRL Rwy 18-36
HIRL Rwy 12-30

CATEGORY	A	B	C	D
S-ILS 30	751-1/2		200 (200-1/2)	
S-LOC 30	920-1/2 369 (400-1/2)		920-5/8 369 (400-5/8)	
C CIRCLING	1040-1 489 (500-1)		1280-2 729 (800-2)	1280-2 1/4 729 (800-2 1/4)