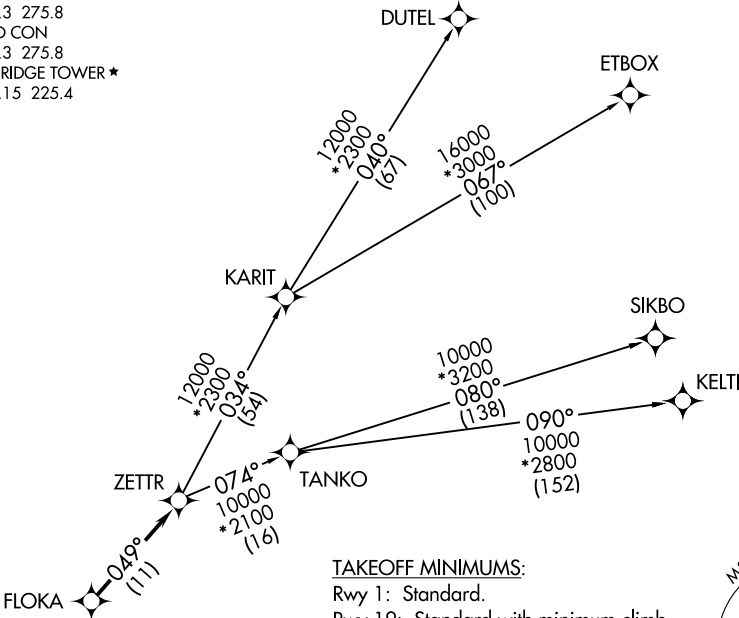


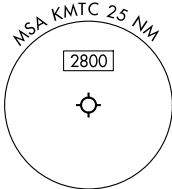
SELFRIIDGE DEP CON ★
119.6 391.9
ATIS
125.325 270.1
CLNC DEL
128.3 275.8
GND CON
128.3 275.8
SELFRIIDGE TOWER ★
120.15 225.4

RNAV 1 - DME/DME/IRU or GPS.
RADAR required.

TOP ALTITUDE:
ASSIGNED BY ATC



TAKEOFF MINIMUMS:
Rwy 1: Standard.
Rwy 19: Standard with minimum climb
of 235' per NM to 1500.



NOTE: Turbojet departures at/above 10000,
maintain 280K until advised by ATC.
NOTE: TANKO Transition: For use by CYYZ
area arrivals only, or as assigned by
ATC.

NOTE: Chart not to scale.

DEPARTURE ROUTE DESCRIPTION

TAKEOFF RUNWAY 1: Climb on heading
007° or as assigned by ATC, thence....
TAKEOFF RUNWAY 19: Climb on heading
187° or as assigned by ATC, thence....
....for RADAR vectors to FLOKA, then on track
049° to ZETTR, then on (transition). Maintain
ATC assigned altitude, expect filed altitude
10 minutes after departure.

DUTEL TRANSITION (ZETTR4.DUTEL):
ETBOX TRANSITION (ZETTR4.ETBOX):
KELTI TRANSITION (ZETTR4.KELTI):
SIKBO TRANSITION (ZETTR4.SIKBO):
TANKO TRANSITION (ZETTR4.TANKO):