

MT. CLEMENS, MICHIGAN

RNAV (GPS) RWY 1

APCH CRS	Rwy Idg	9000
007°	TDZE	580
	Arpt Elev	580

AL-276 (USAF)

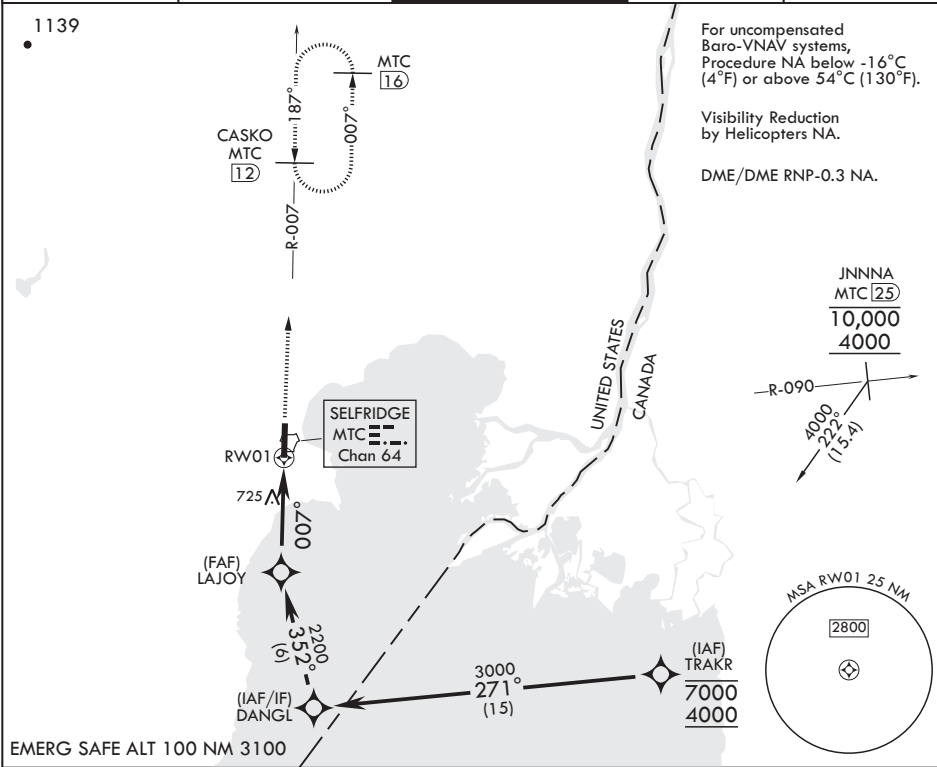
SELFIDGE ANGB (KMTC)

⚠ * When ALS inop increase RVR to 60, vis to 1 1/8 miles.
** When ALS inop increase CAT AB RVR to 55, vis to 1 mile;
CAT CDE RVR to 60, vis to 1 1/8 miles.
*** Circling not authorized W of Rwy 01-19.

SALS
A2

MISSED APPROACH: Climb to 1200 then climbing right turn to 4000 direct CASKO (MTC TACAN R-007/12 DME) and hold, continue climb-in-hold to 4000.

ATIS 125.325 270.1	APP CON/DEP CON 119.6 318.2	TOWER★ 120.15 (CTAF) 0 225.4	GND CON 128.3 275.8	CLNC DEL 128.3 275.8
-----------------------	--------------------------------	---------------------------------	------------------------	-------------------------



DANGL

3000

352°

LAJOY

2200

GP 3.00° TCH 52

1.2 NM to RW01

RW01

4.9 NM

TWR

1200

ELEV 580

TDZE 580

HIRL all Rwys 0

REIL all Rwys 0

A1 61

P

9000 x 150

P

01

A2

007° to RW01

CATEGORY	A	B	C	D	E
LNAV/VNAV DA*	1000/50		420	(500-1)	
LNAV MDA**	1000/40 420 (500-¾)		1000/50	420	(500-1)
C CIRCLING***	1040-1 460 (500-1)		1040-1½ 460 (500-1½)	1140-2 560 (600-2)	

MT. CLEMENS, MICHIGAN

42°37'N - 82°50'W

SELFIDGE ANGB (KMTC)

Orig 20MAY21

RNAV (GPS) RWY 1

EC-1, 07 AUG 2025 to 04 SEP 2025

EC-1, 07 AUG 2025 to 04 SEP 2025