

MT. CLEMENS, MICHIGAN

ILS or LOC Z RWY 19

LOC I-MTC

110.1

APCH CRS

187°

Rwy Idg

9000

TDZE

579

Arprt Elev

580

[USAF]

SELFREDGE ANGB (KMTC)

✚

* When ALS inop, increase RVR to 40, vis to ¼ mile.

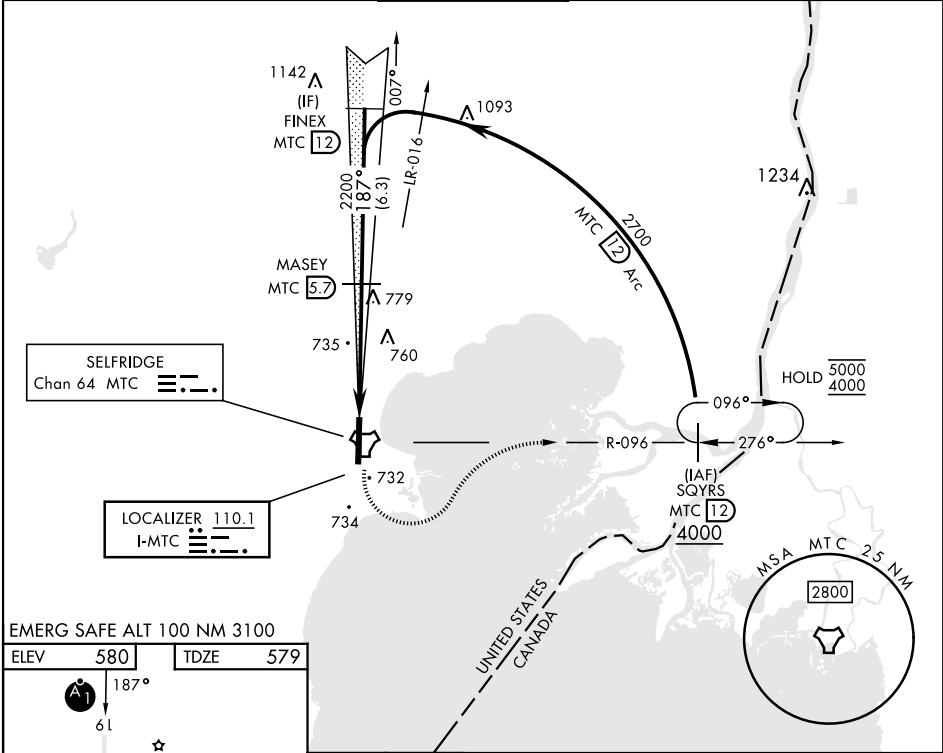
** When ALS inop, increase CAT AB RVR to 55, vis to 1 mile, CAT CDE vis to 1½ miles.

*** Circling not authorized W of Rwy 01-19.

ALSF-1

MISSED APPROACH: Climbing left turn to 4000, intercept MTC R-096 to SQYRS and hold, continue climb-in-hold to 4000.

ATIS	SELFREDGE APP CON	SELFREDGE TOWER ★	GND CON	CLNC DEL
125.325 270.1	119.6 318.2	120.15(CTAF) 225.4	128.3 275.8	128.3 275.8



EMERG SAFE ALT 100 NM 3100

ELEV	580	TDZE	579
------	-----	------	-----

TWR

P

9000 x 150

01

HIRL Rwy 01-19

REIL Rwy 01-19

FAF to MAP 4.9 NM					
Knots	60	90	120	150	180
Min:Sec	4:54	3:16	2:27	1:58	1:38

4000 MTC R-096

SQYRS MTC 12

4000

MTC 2.2

HAMUK MTC 0.8

MTC 5.7

FINEX MTC 12

2700

187°

2200

4.9 NM

GS 3.00°

TCH 52

CATEGORY	A	B	C	D	E
S-ILS 19*	779/24		200	(200-½)	
S-LOC 19**	1060/24	481 (500-½)	1060/50	481 (500-1)	
CIRCLING ***	1060-1	480 (500-1)	1060-1½ 480 (500-1½)	1140-2	560 (600-2)

MT. CLEMENS, MICHIGAN

42°37'N-82°50'W

SELFREDGE ANGB (KMTC)

Amtd 4 26DEC24

ILS or LOC Z RWY 19

EC-1, 07 AUG 2025 to 04 SEP 2025

EC-1, 07 AUG 2025 to 04 SEP 2025