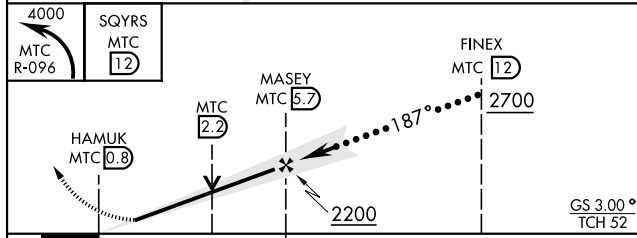
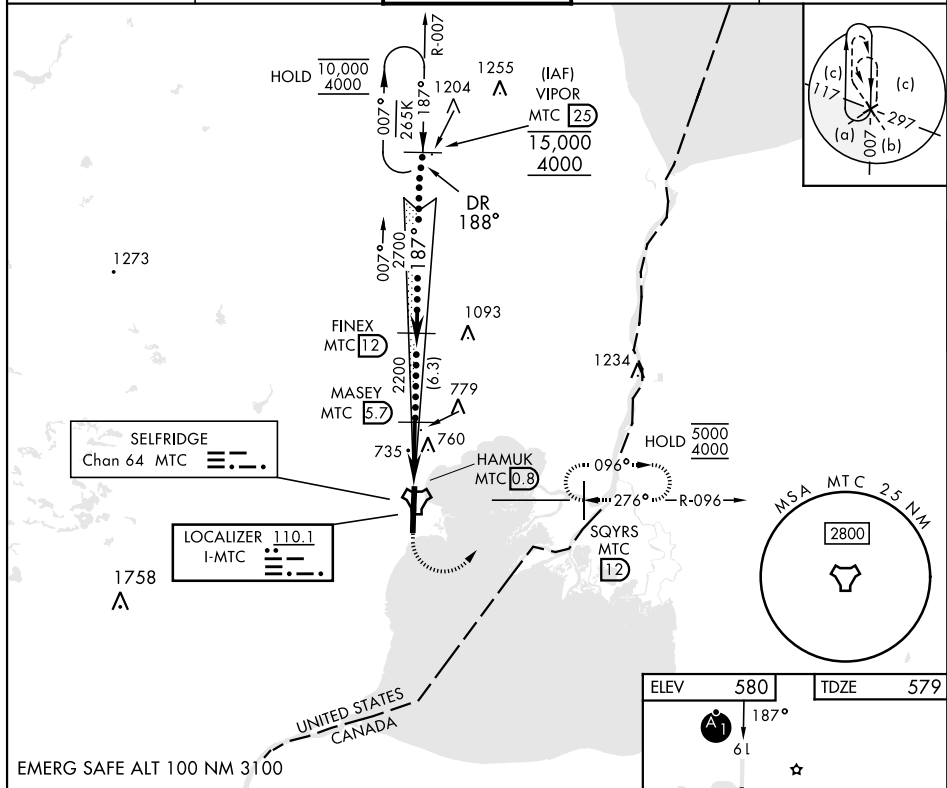


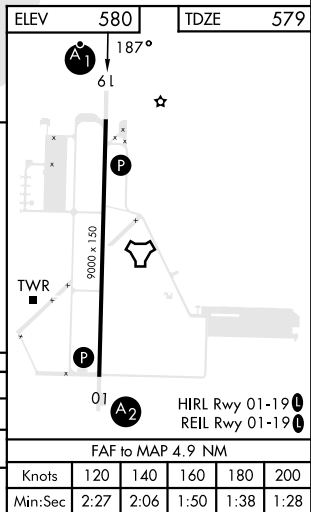
HI-ILS or LOC Y RWY 19

LOC I-MTC <b>110.1</b>	APCH CRS <b>187°</b>	Rwy Ldg TDZE Arpt Elev <b>9000</b> <b>579</b> <b>580</b>	[USAF]	SELFRIEDGE ANGB (KMTC)
*When ALS inop, increase RVR to 40, vis to ¾ mile. **When ALS inop, increase vis to 1¾ miles. ***Circling not authorized W of Rwy 01-19.				
ALSF-1				
MISSED APPROACH: Climbing left turn to 4000, intercept MTC R-096 to SQYRS and hold, continue climb-in-hold to 4000.				

ATIS <b>125.325 270.1</b>	APP CON <b>119.6 318.2</b>	TOWER ★ <b>120.15 (CTAF) 0 225.4</b>	GND CON <b>128.3 275.8</b>	CLNC DEL <b>128.3 275.8</b>
------------------------------	-------------------------------	---	-------------------------------	--------------------------------



CATEGORY	C	D	E
S-ILS 19 *	779/24	200 (200-½)	
S-LOC 19 **	1060/50	481 (500-1)	
CIRCLING ***	1060-1½ 480 (500-1½)	1140-2	560 (600-2)



HI-ILS or LOC Y RWY 19