

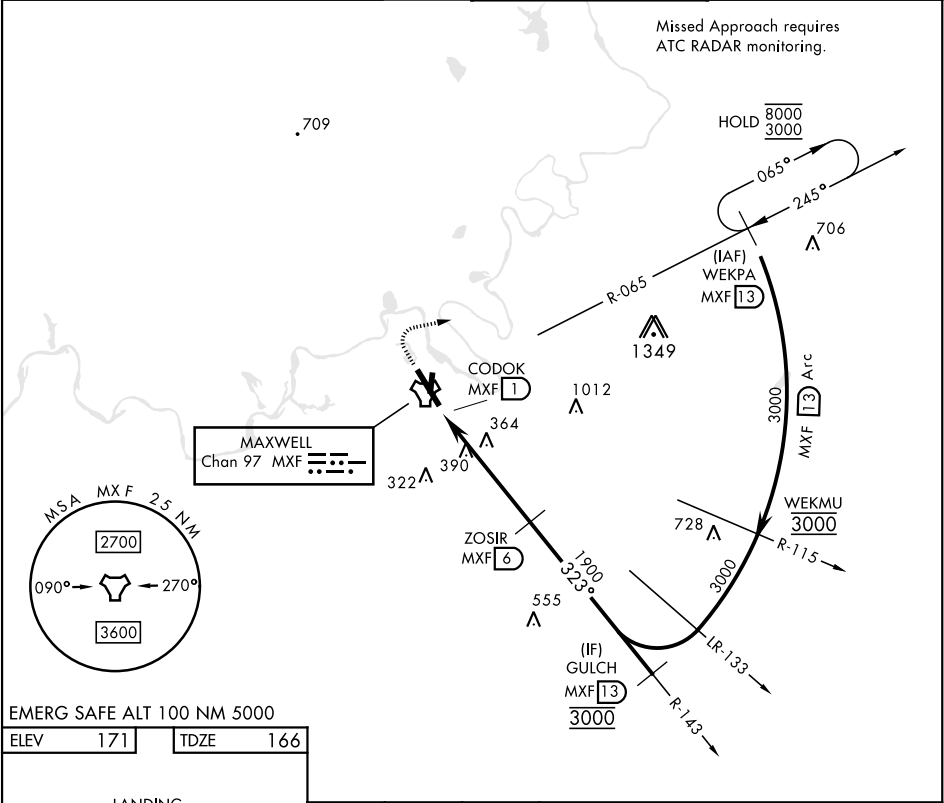
TACAN RWY 33

TACAN	MXF	APCH CRS	Rwy Idg
Chan	97	323°	TDZE 166
			Arpt Elev 171

[USAF]

MAXWELL AFB (KMXF)

* Circling not authorized E of Rwy 15-33.		MISSED APPROACH: Climb to 1000, then climbing right turn to 3000 to intercept MXF TACAN R-065 outbound to 13 DME (WEKPA) and hold.	
ATIS ★ 134.7 269.9	MONTGOMERY APP CON ★ 121.2 269.05 (N) 124.0 363.025 (S)	TOWER ★ 118.15 253.5	GND CON ★ 127.15 289.4



TACAN RWY 33

SE-4, 07 AUG 2025 to 04 SEP 2025

SE-4, 07 AUG 2025 to 04 SEP 2025