

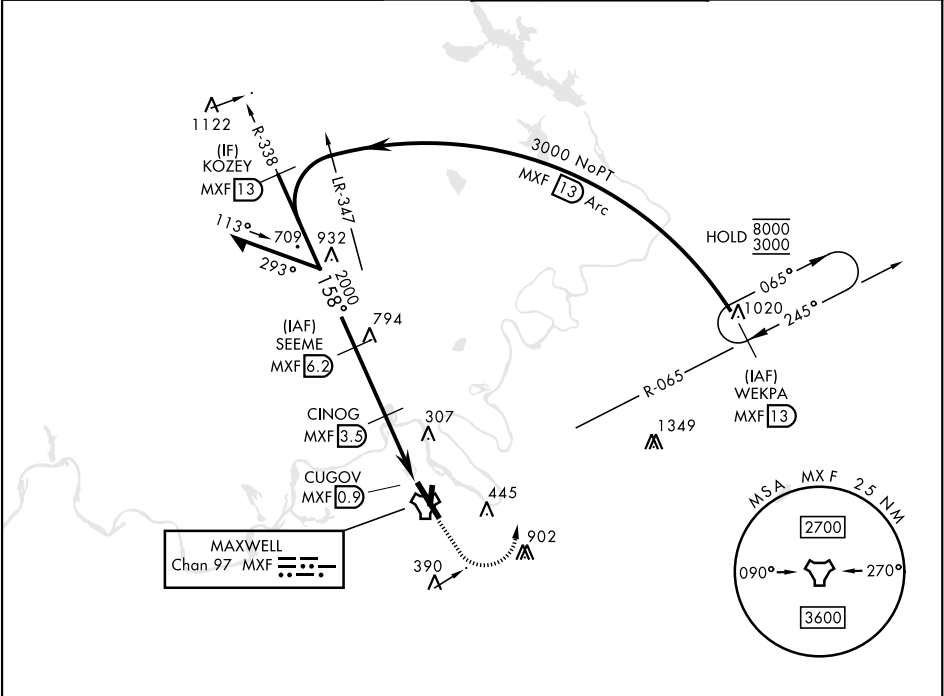
TACAN RWY 15

TACAN MXF	APCH CRS	Rwy Idg
Chan 97	158°	8008
		TDZE 171
		Arpt Elev 171

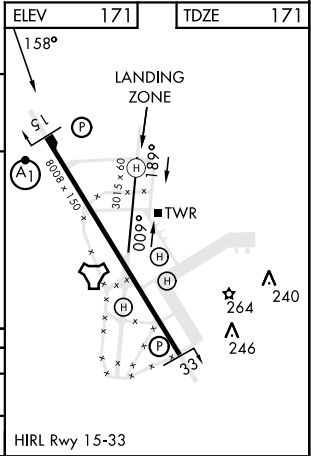
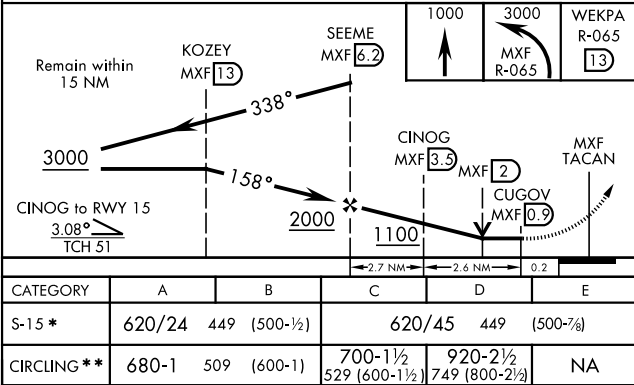
[USAF]

MAXWELL AFB (KMXF)

RADAR required for missed approach.		ALSF-1	MISSED APPROACH: Climb to 1000, then climbing left turn to 3000 to intercept MXF TACAN R-065 outbound to 13 DME (WEKPA) and hold.
▼ * When ALS inop, increase CAT AB RVR to 55 and vis to 1 mile, CAT CDE and vis to 1½ miles. ** Circling not authorized E of Rwy 15-33.			
ATIS ★	MONTGOMERY APP CON ★	TOWER ★	GND CON ★
134.7 269.9	121.2 269.05 (N) 124.0 363.025 (S)	118.15 253.5	127.15 289.4



EMERG SAFE ALT 100 NM 5000



TACAN RWY 15

SE-4, 07 AUG 2025 TO 04 SEP 2025

SE-4, 07 AUG 2025 TO 04 SEP 2025