


WAAS
CH **56200**
W28A

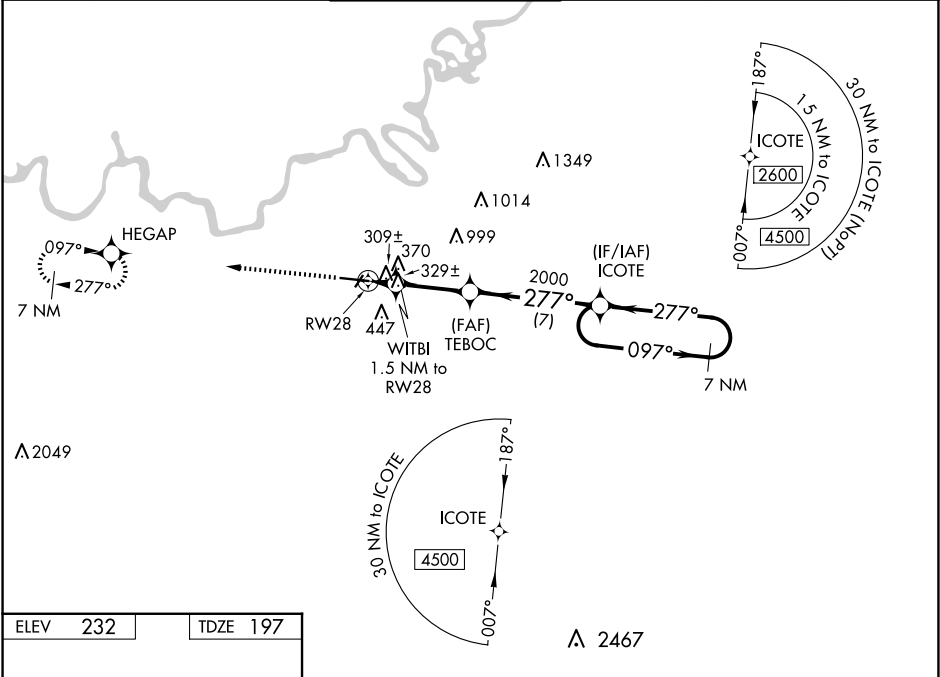
APP CRS
277°

Rwy Idg
TDZE **197**
Apt Elev **232**

RNAV (GPS) RWY 28

MONTGOMERY RGNL (DANNELLY FLD) (MGM)

RNP APCH-GPS.					MALSR		<div>MISSED APPROACH: Climb to 3100 direct HEGAP and hold.</div>
<div><div>▼</div><div>▲</div></div> For uncompensated Baro-VNAV systems, LNAV/VNAV NA below -8°C or above 54°C. For inop MALSR, increase LPV Cat E visibility to ¾ mile; increase LNAV/VNAV Cat E visibility to 1 ½ mile; increase LNAV Cat E visibility to 1 ½ mile. Circling for Cat E NA north of Rwy 10-28.					<div></div>		
ATIS 120.675	MONTGOMERY APP CON ★ 124.0 363.025	DANNELLY TOWER ★ 119.7 (CTAF) 0 360.85	GND CON 121.7 348.6	CLNC DEL 118.3 270.3	UNICOM 122.95		



ELEV 232

TDZE 197

REIL Rwy 3 1

MIRL Rwy 3-21

HIRL Rwy 10-28

TWR 368

277°

3100 HEGAP		VGSi and RNAV glidepath not coincident (VGSi Angle 3.00/TCH 75).		7 NM Holding Pattern	
WITBI 1.5 NM to RW28		TEBOC 2000		ICOTE	
1 NM to RW28		720		2000	
1 NM		0.5		4 NM	
7 NM		7 NM		7 NM	
CATEGORY	A	B	C	D	E
LPV DA	397-½		200 (200-½)		
LNAV/VNAV DA	606-⅞		409 (400-⅞)		
LNAV MDA	580-½	383 (400-½)	580-⅝ 383 (400-⅝)		
CIRCLING	700-1	468 (500-1)	800-1½ 568 (600-1½)	860-2 628 (700-2)	860-2¼ 628 (700-2¼)