

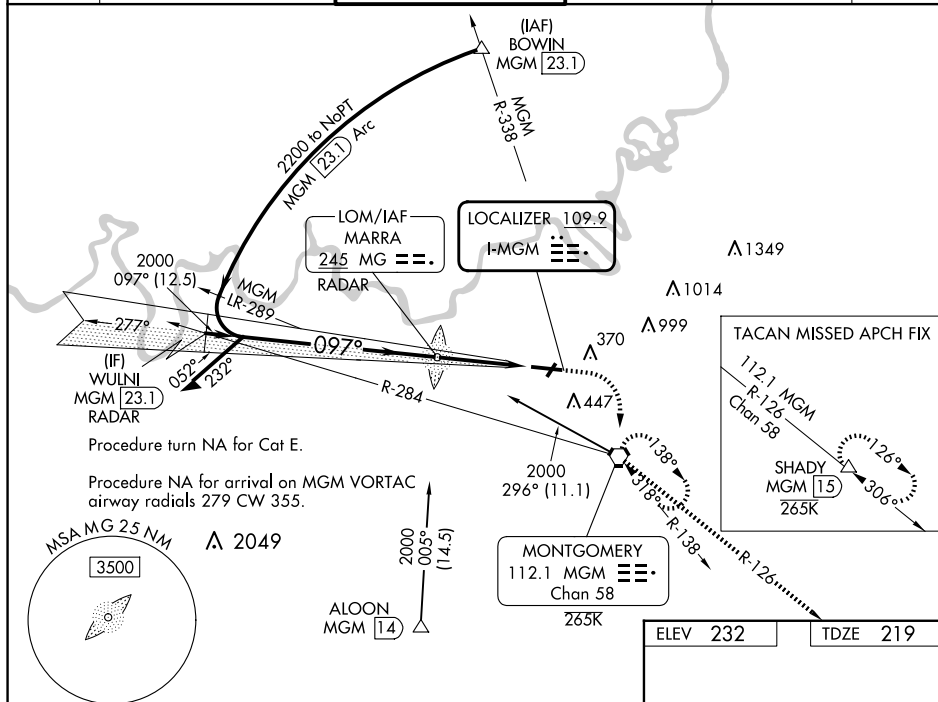
ILS Z or LOC Z RWY 10
MONTGOMERY RGNL (DANNELLY FLD) (MGM)

MISSED APPROACH: Climb to 700 then climbing right turn to 3000 direct MGM VORTAC and hold, continue climb-in-hold to 3000 (TACAN aircraft continue climb to 3500 on MGM VORTAC R-126 to SHADY/MGM 1.5 DME and hold SE, RT, 306° inbound).

T Circling NA for Cat E north of Rwy 10-28. For inop ALS, increase S-ILS 10** Cat E visibility to RVR 4000, and increase S-LOC 10 Cat E visibility to 1 $\frac{3}{8}$ SM. **RVR 1800 authorized with the use of FD or AP or HUD to DA.

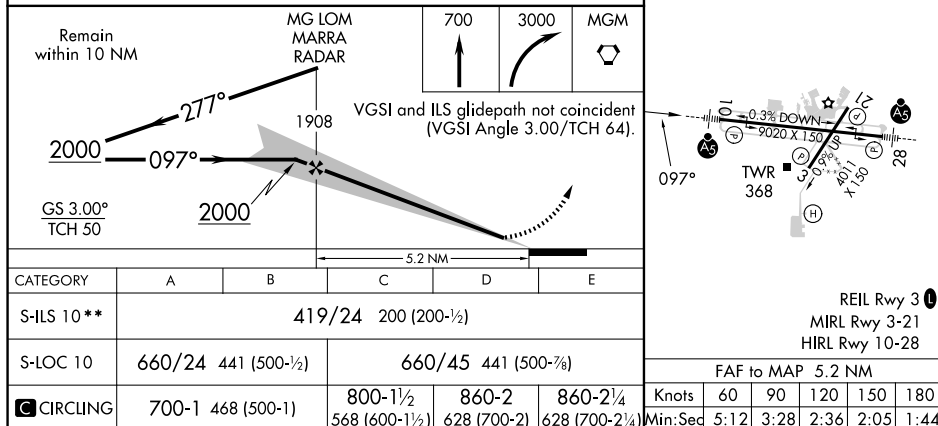
A5

ATIS 120.675	MONTGOMERY APP CON ★ 124.0 363.025	DANNELLY TOWER ★ 119.7 (CTAF) 0 360.85	GND CON 121.7 348.6	CLNC DEL 118.3 270.3	UNICOM 122.95
-----------------	---------------------------------------	---	------------------------	-------------------------	------------------



SE-4, 07 AUG 2025 to 04 SEP 2025

SE-4, 07 AUG 2025 to 04 SEP 2025



MONTGOMERY RGNL (DANNELLY FLD) (MGM)

32°18'N-86°24'W

ILS Z or LOC Z RWY 10