

LOC I-DLV	APP CRS	Rwy Idg	9020
108.5	277°	TDZE	197
		Apt Elev	232

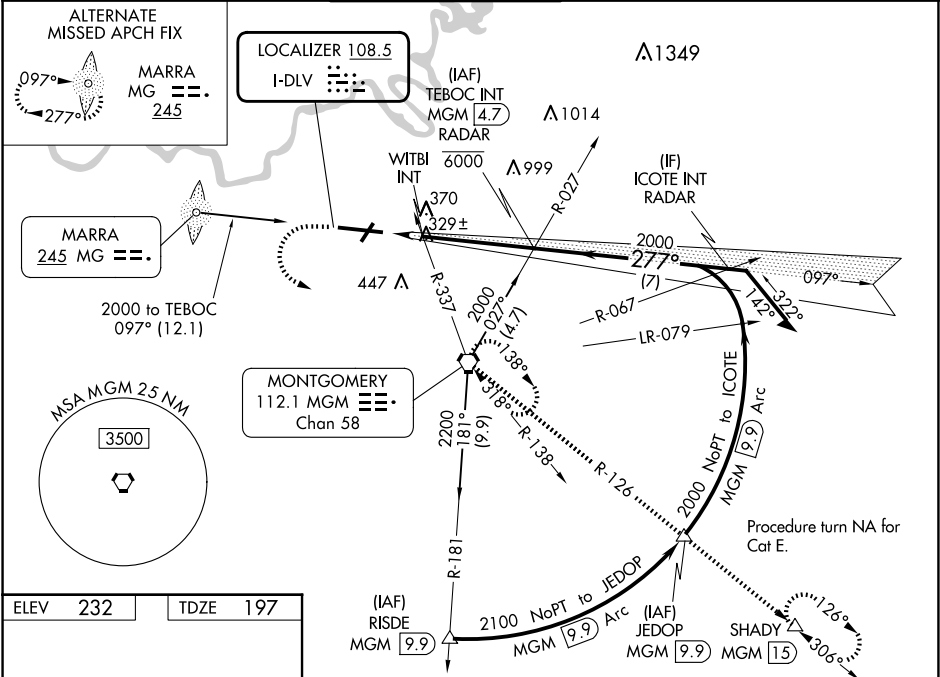
ILS Y or LOC RWY 28
MONTGOMERY RGNL (DANNELLY FLD) (MGM)

⚠ For inop ALS, increase S-ILS 28 Cat E visibility to ¾ SM; S-LOC 28 Cat C/D/E visibility to 1 ¾ SM and increase WITBI fix minimums S-LOC 28 Cat E visibility to 1 ¼ SM. Circling for Cat E NA north of Rwy 10-28.

MALSR

MISSED APPROACH: Climb to 700 then climbing left turn to 3000 direct MGM VORTAC and hold, continue climb-in-hold to 3000 (TACAN aircraft continue climb to 3500 on MGM VORTAC R-126 to SHADY/MGM 15 DME and hold SE, RT, 306° inbound).

ATIS	MONTGOMERY APP CON ★	DANNELLY TOWER ★	GND CON	CLNC DEL	UNICOM
120.675	124.0 363.025	119.7 (CTAF) 360.85	121.7 348.6	118.3 270.3	122.95



ELEV 232 TDZE 197

REIL Rwy 3 0

MIRL Rwy 3-21

HIRL Rwy 10-28

FAF to MAP 5.5 NM

Knots	60	90	120	150	180
Min:Sec	5:30	3:40	2:45	2:12	1:50

TWR 368

0.3% DOWN

0.3% UP

277°

700 3000 MGM

TEBOC INT RADAR

WITBI INT

Remain within 10 NM

VGSI and ILS glidepath not coincident (VGSI Angle 3.00/TCH 75).

GS 3.00° TCH 56

1.5 NM 4 NM

CATEGORY	A	B	C	D	E
S-ILS 28	397-½ 200 (200-½)				
S-LOC 28	700-½	503 (500-½)	700-1	503 (500-1)	
CIRCLING	700-1	468 (500-1)	800-1½ 568 (600-1½)	860-2 628 (700-2)	860-2¼ 628 (700-2¼)
WITBI FIX MINIMUMS (DUAL VOR RECEIVERS REQUIRED)					
S-LOC 28	620-½	423 (400-½)	620-¾ 423 (400-¾)		
CIRCLING	700-1	468 (500-1)	800-1½ 568 (600-1½)	860-2 628 (700-2)	860-2¼ 628 (700-2¼)