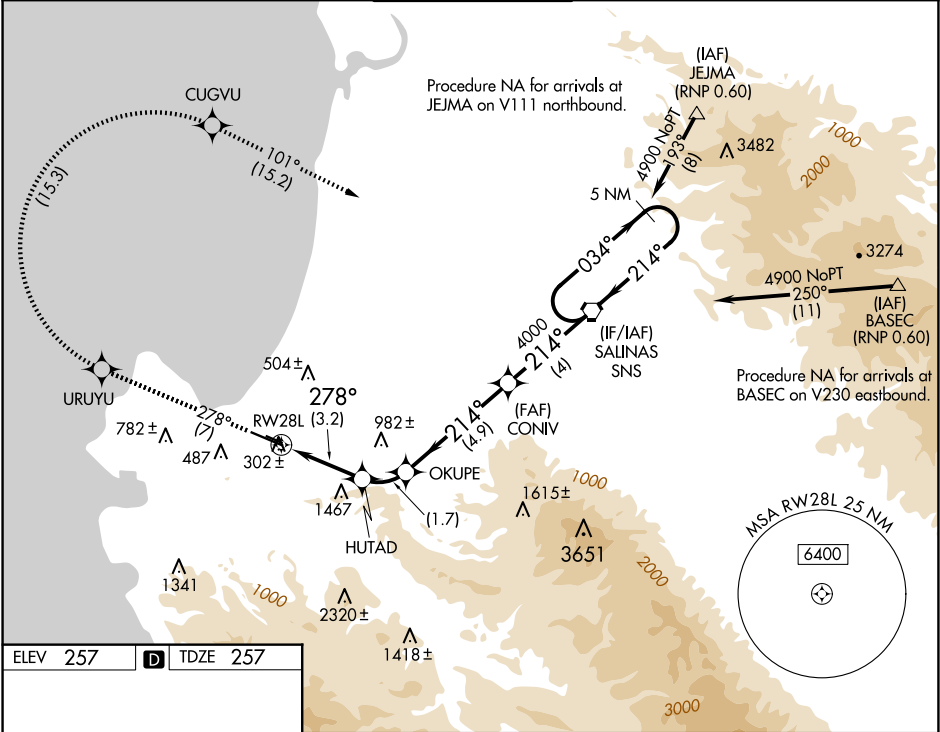


APP CRS	Rwy Idg	7000
278°	TDZE	257
	Apt Elev	257

RNAV (RNP) Z RWY 28L

MONTEREY RGNL (MRY)

<div><div></div><div></div></div> <div>For uncompensated Baro-VNAV systems, procedure NA below 0°C (32°F) or above 48°C (120°F). RF required. GPS required.</div>			MISSED APPROACH: Climb to 5500 on track 278° to URUYU, right turn to CUGVU, and on track 101° to SNS VORTAC and hold.		
ATIS	NORCAL APP CON		MONTEREY TOWER★	GND CON	CLNC DEL
119.25	133.0 251.15 (001°-135°) 127.15 307.125 (136°-360°)		118.4 (CTAF) 0 257.8	120.875 348.6	135.45
					UNICOM
					122.95



ELEV 257

D

TDZE 257

10R

1.42 UP

3503

1.60

2173

X 150

28L

278°

TWR 301

5500

URUYU

tr 278°

CUGVU

tr 101°

SNS

5 NM Holding Pattern

SNS VORTAC

CONIV

HUTAD

OKUPE

RWY 28L

278°

1505

2143

214°

4000

034°

4900

GP 3.60°

TCH 45

CATEGORY	A	B	C	D
RNP 0.10 DA	527/45	270 (300-7/8)		NA
RNP 0.15 DA	767- 1½	510 (600-1½)		NA
RNP 0.20 DA	1236-3	979 (1000-3)		NA

AUTHORIZATION REQUIRED