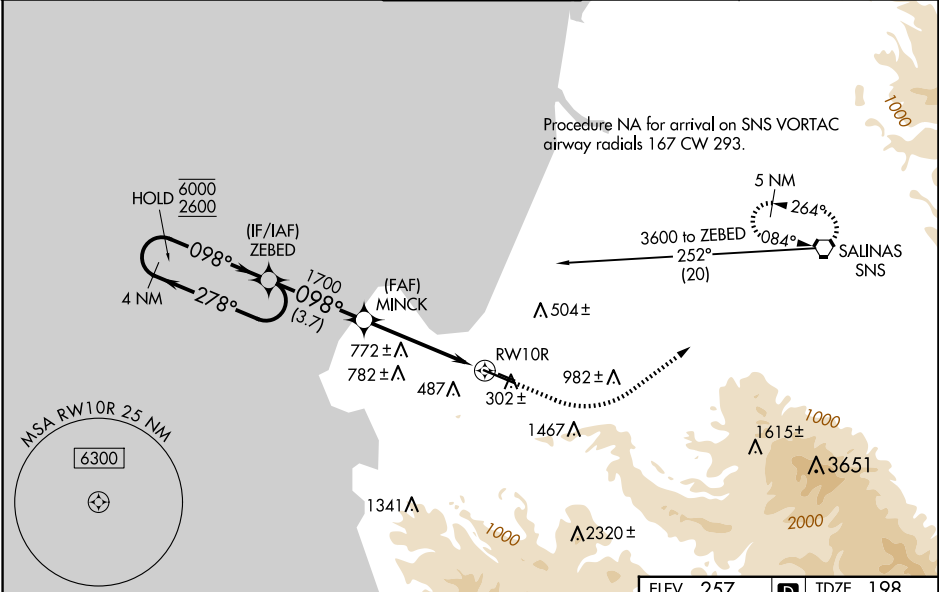


WAAS CH 69602 W10A	APP CRS 098°	Rwy Idg TDZE 198 Apt Elev 257	7000 198 257
--	------------------------	---	---

RNAV (GPS) RWY 10R
MONTEREY RGNL (MRY)

RNP APCH - GPS.	MALSR	MISSED APPROACH: Climb to 1000 then climbing left turn to 5000 direct SNS VORTAC and hold, continue climb-in-hold to 5000. *MISSED approach requires minimum climb of 387 feet per NM to 1700.
▼ For uncompensated Baro-VNAV systems, LNAV/VNAV NA below 2°C or above 54°C. Circling NA south of Rwy 10R-28L. For inop ALS, increase LPV all Cats visibility to 1½ SM and LNAV Cat C/D visibility to 2½ SM. *RVR 1800 authorized with use of FD or AP or HUD to DA.		

ATIS 119.25	NORCAL APP CON 133.0 251.15 (001°-135°) 127.15 307.125 (136°-360°)	MONTEREY TOWER ★ 118.4 (CTAF) 0 257.8	GND CON 120.875 348.6	CLNC DEL 135.45	UNICOM 122.95
-----------------------	--	--	---------------------------------	---------------------------	-------------------------



<div>4 NM Holding Pattern</div> <div><div>6000</div><div>2600</div></div> <div>GP 3.00° TCH 45</div>					<div>ZEBED</div> <div>MINCK</div> <div>1000</div> <div>5000</div> <div>SNS</div>					<div>ELEV 257</div> <div>D</div> <div>TDZE 198</div>				
<div>← 278°</div> <div>098° →</div> <div>098°</div> <div>1700</div> <div>2.4 NM to RWY 10R</div> <div>RWY 10R</div>					<div>1700</div> <div>3.7 NM</div> <div>2.3 NM</div> <div>2.4 NM</div>					<div>098°</div> <div>100</div> <div>1.4° UP</div> <div>TWR 301</div> <div>3503 X 50</div> <div>7175 X 150</div> <div>281</div>				
CATEGORY	A		B		C		D							
LPV DA*			398/24		200 (200-½)									
LPV DA			677/50		479 (500-1)									
LNAV/VNAV DA			754/60		556 (500-1¼)									
LNAV MDA	980/24 782 (800-½)		980/40 782 (800-¾)		980-1¾ 782 (800-1¾)									
CIRCLING	980-1 723 (800-1)		980-1¼ 723 (800-1¼)		1280-3 1023 (1100-3)		NA							
<div>MIRL Rwy 10L-28R</div> <div>HIRL Rwy 10R-28L</div> <div>REIL Rwy 28L</div> <div>REIL Rws 10L and 28R</div>														