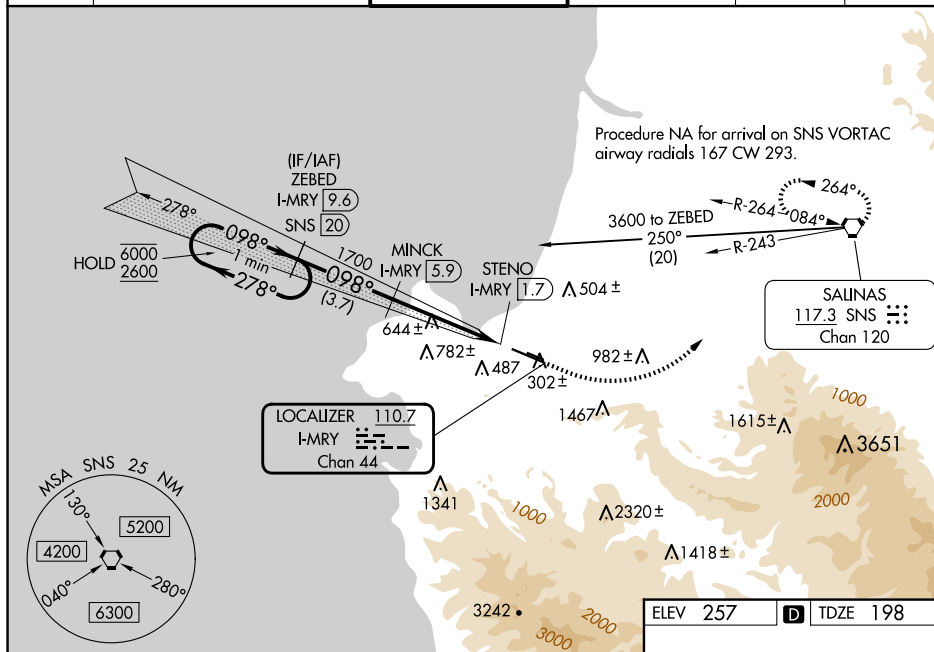


ILS or LOC RWY 10R
MONTEREY RGNL (MRY)

T
A Circling NA south of Rwy 10R-28L.
For inop ALS, increase S-ILS 10R all Cats visibility to RVR 6000,
and increase S-LOC 10R Cat C and D visibility to 2 SM.

MISSED APPROACH: Climb to 600 then climbing left turn to 5000 on heading 030° and on SNS VORTAC R-243 to SNS VORTAC and hold, continue climb-in-hold to 5000.
Missed approach requires minimum climb of 265 feet per NM to 1360.

ATIS 119.25	NORCAL APP CON 133.0 251.15 (001°-135°) 127.15 307.125 (136°-360°)	MONTEREY TOWER * 118.4 (CTAF) 0 257.8	GND CON 120.875 348.6	CLNC DEL 135.45	UNICOM 122.95
----------------	--	--	--------------------------	--------------------	------------------



One Minute Holding Pattern

ZEBED I-MRY 9.6

MINCK I-MRY 5.9

SNS R-243

hdg 030°

6000 ← 278°

2600 → 098°

098°

1700

* I-MRY 3.4

* LOC only

STENO I-MRY 1.7

GS 3.00°


TCH 45

3.7 NM

2.5 NM

1.7 NM

0.5 NM

CATEGORY	A	B	C	D
S-ILS 10R #	398/24 200 (200-½)			
S-ILS 10R	583/35 385 (400-⅔)			
S-LOC 10R	920/24 722 (700-½)		920-1⅝ 722 (700-1⅔)	
 CIRCULING	920-1 663 (700-1)		1280-3 1023 (1100-3)	NA

