

VORTAC MLU	APP CRS	Rwy Idg
<b>117.2</b>	<b>236°</b>	<b>7504</b>
Chan <b>119</b>		TDZE <b>78</b>
		Apt Elev <b>79</b>

VOR RWY 22  
MONROE RGNL (MLU)

DME required.

⚠

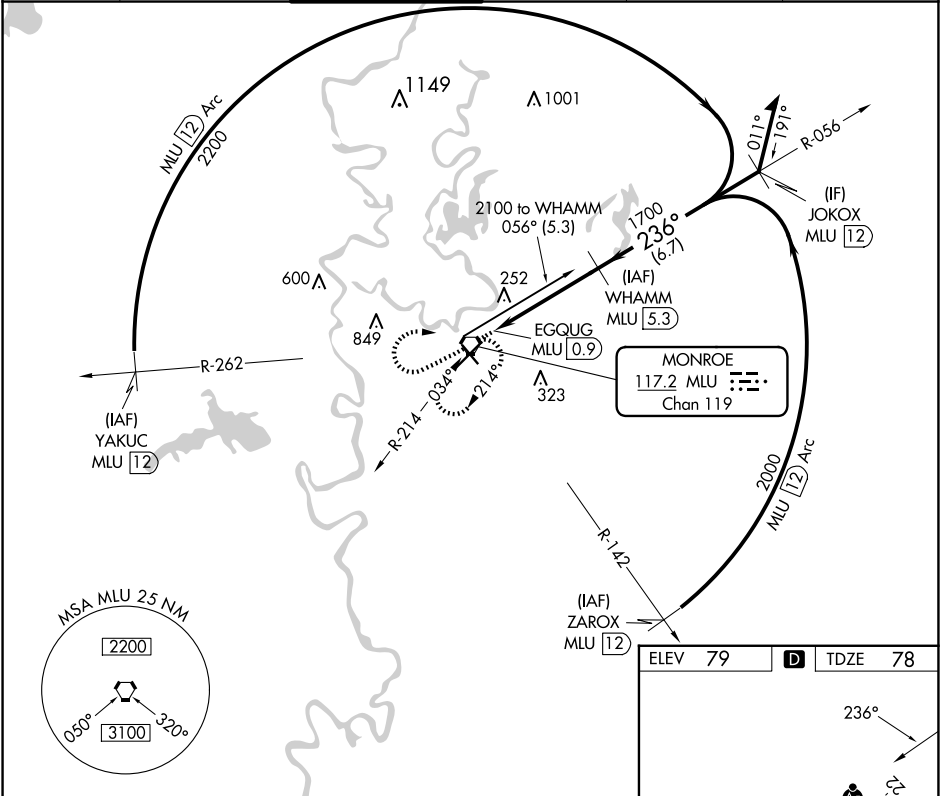
Circling Rwy 14 NA at night. Rwy 22 helicopter visibility reduction below ¾ SM NA. For inop ALS, increase S-22 Cat A/B ASR visibility to 1 SM, and Cat C/D to 1½ SM.



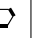
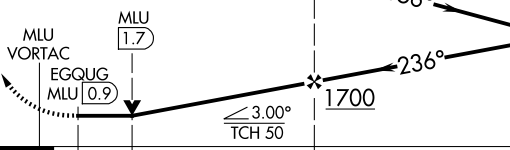

MALSR

MISSED APPROACH:

Climb to 1800 then climbing right turn to 3000 direct MLU VORTAC and hold, continue climb-in-hold to 3000.

ATIS <b>125.05</b>	MONROE APP CON★ <b>118.15 290.475</b>	MONROE TOWER★ <b>118.9 (CTAF) 257.8</b>	GND CON <b>121.9</b>	CLNC DEL <b>121.65</b>	UNICOM <b>122.95</b>
-----------------------	--	--	-------------------------	---------------------------	-------------------------



1800	3000	MLU				
						
						
CATEGORY	A		B		C	D
S-22	560-¾ 482 (500-¾)				560-1	482 (500-1)
 CIRCLING	560-1 481 (500-1)	580-1 501 (600-1)	740-1¾ 661 (700-1¾)	1160-3 1081 (1100-3)		

