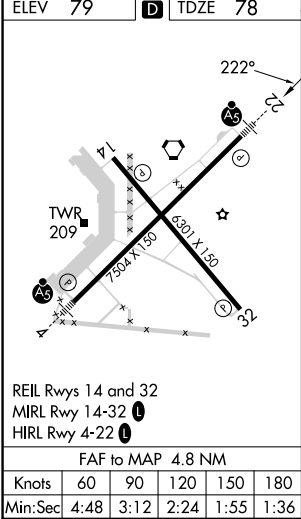
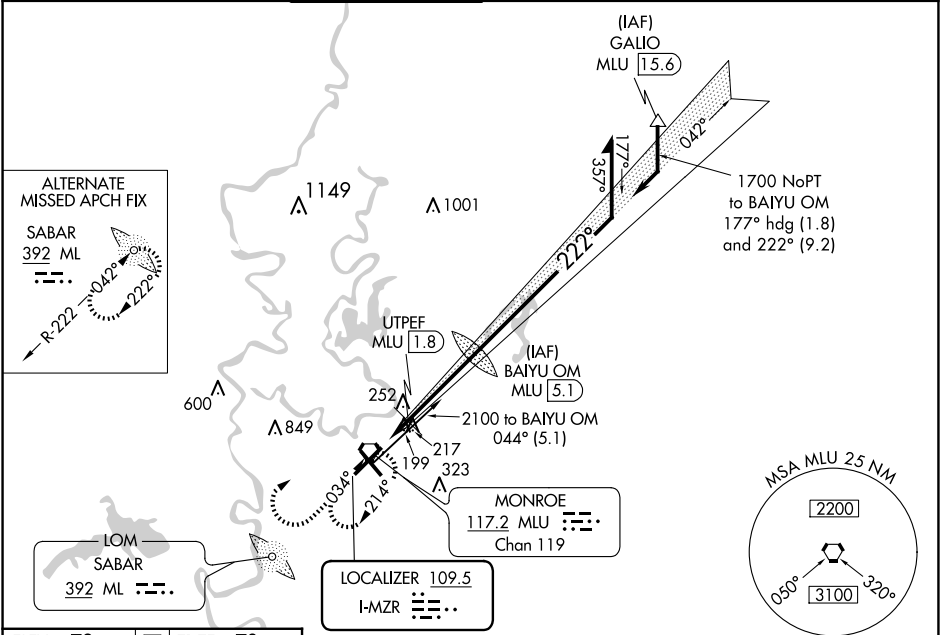


LOC I-MZR <b>109.5</b>	APP CRS <b>222°</b>	Rwy Idg TDZE <b>78</b> Apt Elev <b>79</b>
---------------------------	------------------------	---

ILS or LOC RWY 22  
MONROE RGNL (MLU)

DME or RADAR required for procedure entry.	MALSR 	MISSED APPROACH: Climb to 1800 then climbing right turn to 3000 direct MLU VORTAC and hold, continue climb-in-hold to 3000.
Circling Rwy 14 NA at night. For inop ALS, increase S-LOC 22 Cat C/D visibility to 1½ SM. # DME from MLU VORTAC.		

ATIS <b>125.05</b>	MONROE APP CON ★ <b>118.15 290.475</b>	MONROE TOWER ★ <b>118.9 (CTAF) 257.8</b>	GND CON <b>121.9</b>	CLNC DEL <b>121.65</b>	UNICOM <b>122.95</b>
-----------------------	---	---	-------------------------	---------------------------	-------------------------



1800	3000	MLU	VGSI and ILS glidepath not coincident (VGSI Angle 3.00/TCH 50).			
*LOC only.						
CATEGORY			B		C	D
S-ILS 22			278-½ 200 (200-½)			
S-LOC 22			560-½ 482 (500-½)		560-1 482 (500-1)	
CIRCLING			580-1 501 (600-1)		740-1¾ 661 (700-1¾)	1160-3 1081 (1100-3)
# UTPEF FIX MINIMUMS						
S-LOC 22			500-½ 422 (500-½)		500-¾ 422 (500-¾)	
CIRCLING			580-1 501 (600-1)		740-1¾ 661 (700-1¾)	1160-3 1081 (1100-3)