

WAAS CH 42515 W13A	APP CRS 126°	Rwy Idg TDZE 590 Apt Elev 590	7032
----------------------------------------	------------------------	---------------------------------------------------	-------------

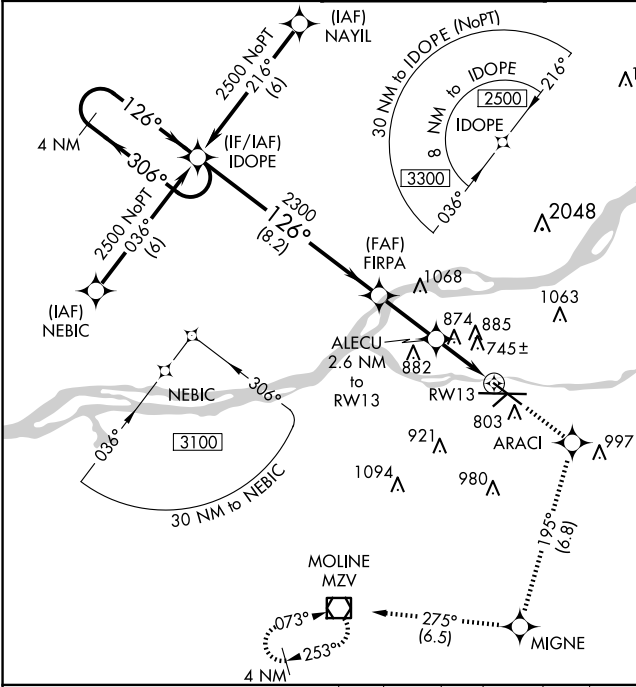
RNAV (GPS) RWY 13

QUAD CITIES INTL (MLI)

⚠ Circling to Rwy 5 NA at night. For uncompensated Baro-VNAV systems, LNAV/VNAV NA below -16°C (4°F) or above 47°C (116°F). DME/DME RNP-0.3 NA. When local altimeter setting not received, use Davenport altimeter setting and increase LPV DA to 955 feet, LNAV/VNAV DA to 1339 feet and all MDA 60 feet; increase LPV all Cats, LNAV/VNAV all Cats, LNAV Cats C and D, and Circling Cats C and D visibility ¼ SM. Rwy 13 helicopter reduction below ¾ SM NA. VDP and Baro-VNAV NA when using Davenport altimeter setting.

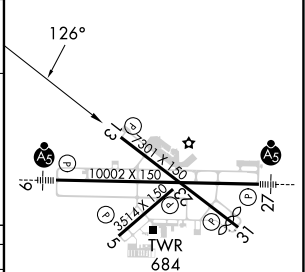
MISSED APPROACH:
Climb to 3000 direct
ARACI and on track
195° to MIGNE and
on track 275° to MZV
VOR/DME and hold.

ATIS 121.2	QUAD CITY APP CON ★ 125.95 257.8	QUAD CITY TOWER ★ 119.4(CTAF) 269.55	GND CON 121.9	CLNC DEL 124.05	UNICOM 122.95
----------------------	--------------------------------------------	------------------------------------------------	-------------------------	---------------------------	-------------------------



ELEV 590	D TDZE 590
----------	-------------------

4 NM Holding Pattern	IDOPE	3000	ARACI	tr 195°	MIGNE	tr 275°	MZV
2500	← 306°	126° →	FIRPA	ALECU 2.6 NM to RWY 13	*LNAV only		
GP 3.00° TCH 48		2300		*1.6 NM to RWY 13			
CATEGORY	A	B	C	D			
LPV DA		908-1	318 (400-1)				
LNAV/VNAV DA		1292-2½	702 (800-2½)				
LNAV MDA	1140-1	550 (600-1)	1140-1½	550 (600-1½)	1140-1¾	550 (600-1¾)	
CIRCLING	1140-1	1200-1	1320-2	1420-2¾	1140-1¾	550 (600-1¾)	
	550 (600-1)	610 (700-1)	730 (800-2)	830 (900-2¾)			



HIRL Rwy 9-27 and 13-31
MIRL Rwy 5-23
REIL Rwy 13 and 31

EC-3, 07 AUG 2025 to 04 SEP 2025

EC-3, 07 AUG 2025 to 04 SEP 2025