

VORTAC BFM	APP CRS	Rwy Ldg	9618
116.35	333°	TDZE	25
Chan 110(Y)		Apt Elev	26

VOR RWY 32

MOBILE INTL (BFM)

⚠

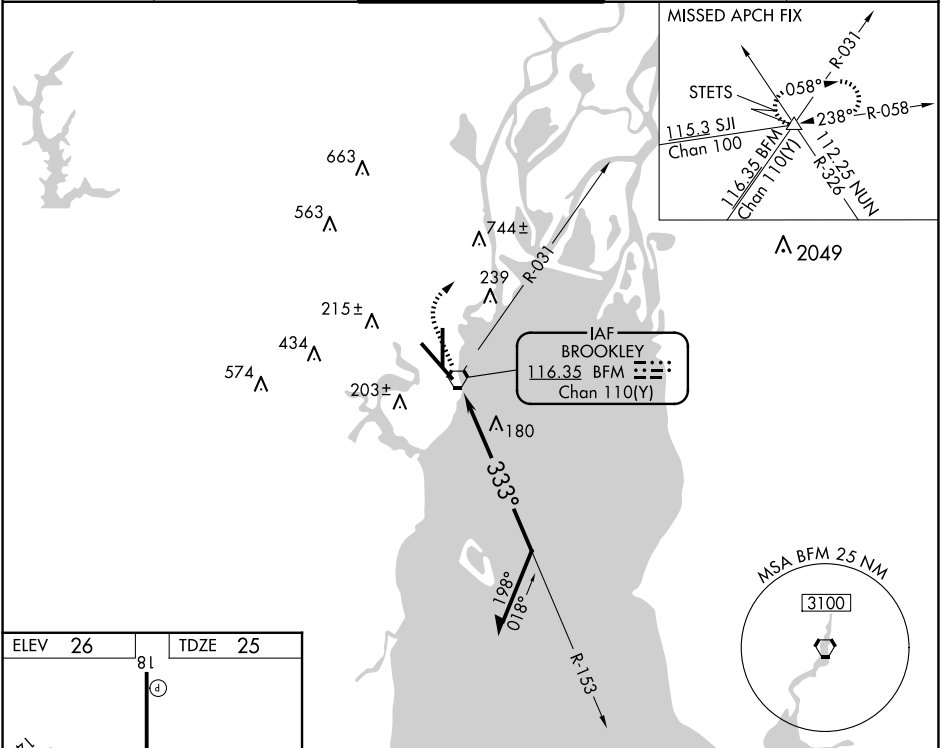
When local altimeter setting not received, use Mobile Rgnl altimeter setting and increase all MDAs 60 feet. For inop MALSR, increase S-32 Cats C/D visibility to 1¾ SM. For inop MALSR when using Mobile Rgnl altimeter setting, increase S-32 Cats C/D visibility to 1¾ SM.

MALSR

MISSED APPROACH:

Climb to 600 then climbing right turn to 2000 via heading 040° and BFM VORTAC R-031 to STETS INT and hold.

ATIS	MOBILE APP CON ★	INTERNATIONAL TOWER★	GND CON	UNICOM
135.575	118.5 269.3	118.8(CTAF) 0 251.1	121.7 239.3	122.95



ELEV 26	TDZE 25
81	7800 X 150
TWR	36
32	333°

REIL Rwy 14
MIRL Rwy 18-36
HIRL Rwy 14-32
TDZ/CL Rwy 32

600	2000	BFM R-031	STETS
↑	hdg 040°		△

BFM VORTAC

153°

1800

333°

0.1 1.3

CATEGORY	A	B	C	D
S-32	540/24	515 (600-½)	540/55	515 (600-1)
CIRCLING	680-1	654 (700-1)	680-1¾ 654 (700-1¾)	1100-3 1074 (1000-3)

SE-4, 07 AUG 2025 to 04 SEP 2025

SE-4, 07 AUG 2025 to 04 SEP 2025