

WAAS CH 97611 W18A	APP CRS 181°	Rwy Ldg TDZE 26 Apt Elev 26
--	------------------------	---

RNAV (GPS) RWY 18

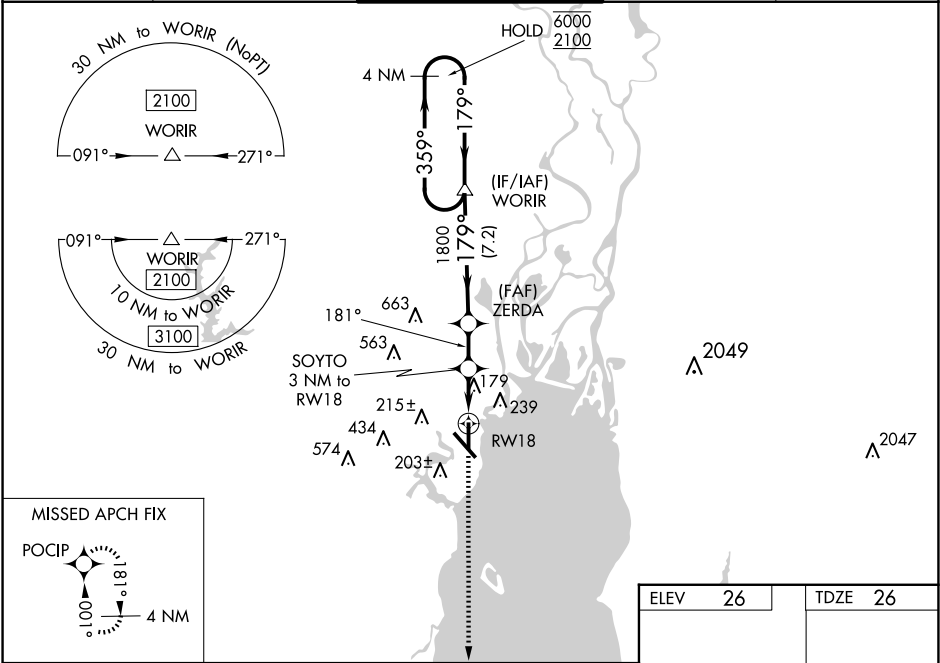
MOBILE INTL (BFM)

RNP APCH - GPS.

Rwy 18 helicopter visibility reduction below ¾ SM NA. For uncompensated Baro-VNAV systems, LNAV/VNAV NA below -2°C or above 54°C.

MISSED APPROACH: Climb to 2000 direct POCIP and hold.

ATIS 135.575	MOBILE APP CON ★ 118.5 269.3	INTERNATIONAL TOWER ★ 118.8 (CTAF) 0 251.1	GND CON 121.7 239.3	UNICOM 122.95
------------------------	--	--	-------------------------------	-------------------------



4 NM Holding Pattern		VGSI and RNAV glidepath not coincident (VGSI Angle 3.00/TCH 64).		2000	POCIP
6000 ← 359° 2100 ← 179°		WORIR ZERDA 1800 179° 181° 1020		SOYTO 3 NM to RW18 1.1 NM to RW18 RW18	
GP 3.00° TCH 50		7.2 NM		2.5 NM	
CATEGORY	A	B	C	D	
LPV DA	276-1		250 (300-1)		
LNAV/VNAV DA	419-1½		393 (400-1½)		
LNAV MDA	440-1	414 (500-1)	440-1½	414 (500-1½)	
CIRCLING	680-1	654 (700-1)	680-1¾ 654 (700-1¾)	1100-3 1074 (1100-3)	

181°

81

7800 X 150

36

TWR

REIL Rwy 14

MIRL Rwy 18-36

HIRL Rwy 14-32

TDZ/CL Rwy 32

SE-4, 07 AUG 2025 to 04 SEP 2025

SE-4, 07 AUG 2025 to 04 SEP 2025