

WAAS CH 50411 W14A	APP CRS 140°	Rwy Ldg 9618 TDZE 26 Apt Elev 26
--	------------------------	---

RNAV (GPS) RWY 14

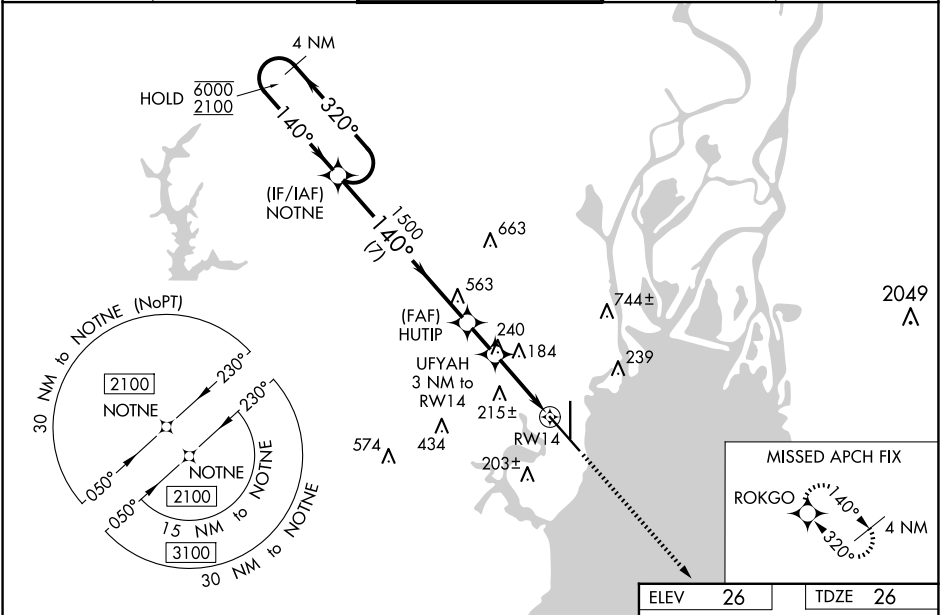
MOBILE INTL (BFM)

RNP APCH - GPS.

Rwy 14 helicopter visibility reduction below ¾ SM NA. For uncompensated Baro-VNAV systems, LNAV/VNAV NA below -2°C or above 54°C.

MISSED APPROACH:
Climb to 1700 direct ROKGO and hold.

ATIS 135.575	MOBILE APP CON ★ 118.5 269.3	INTERNATIONAL TOWER★ 118.8 (CTAF) 0 251.1	GND CON 121.7 239.3	UNICOM 122.95
------------------------	--	---	-------------------------------	-------------------------



4 NM Holding Pattern		VGSI and RNAV glidepath not coincident (VGSI Angle 3.00/TCH 68).		1700	ROKGO
NOTNE		HUTIP		UFYAH 3 NM to RW14	
6000 2100		1500		1.1 NM to RW14	
GP 3.00° TCH 50		1020		RW14	
7 NM		1.5 NM		1.9 NM	
1.1 NM		1.1 NM			
CATEGORY	A	B	C	D	
LPV DA	308-7/8		282 (300-7/8)		
LNAV/VNAV DA	396-1		370 (400-1)		
LNAV MDA	440-1	414 (500-1)	440-1 1/8	414 (500-1 1/8)	
CIRCLING	680-1	654 (700-1)	680-1 3/4	1100-3	
		654 (700-1 3/4)		1074 (1100-3)	

REIL Rwy 14
MIRL Rwy 18-36
HIRL Rwy 14-32
TDZ/CL Rwy 32

81
7800 X 150
36
45
55