

ILS or LOC RWY 32
MOBILE INTL (BFM)

MISSED APPROACH: Climb to 800 then climbing right turn to 2000 on heading 030° and on SJI R-058 to STETS INT/SJI 35.9 DME and hold.

A5

GND CON
121.7 239.3

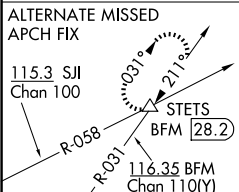


Diagram illustrating the DEXOW 3D Fix Minimums. The diagram shows a 3D perspective view and a 2D plan view. The 3D view shows a 1700m radius and a 1700m distance to the fix. The 2D plan view shows a 1700m radius and a 1700m distance to the fix. The diagram also includes a table of minimums for various categories and a table of minimums for the DEXOW 3D Fix Minimums.

CATEGORY	A	B	C	D
S-ILS 32	225/18 200 (200-½)			
S-LOC 32	580/24	555 (600-½)	580/60	555 (600-1¼)
C CIRCLING	680-1	654 (700-1)	680-1¼ 654 (700-1¼)	1100-3 1074 (1100-3)

DEXOW FIX MINIMUMS

S-LOC 32	340/24 315 (400-½)			
C CIRCLING	680-1	654 (700-1)	680-1¼ 654 (700-1¼)	1100-3 1074 (1100-3)

SE-4, 07 AUG 2025 to 04 SEP 2025