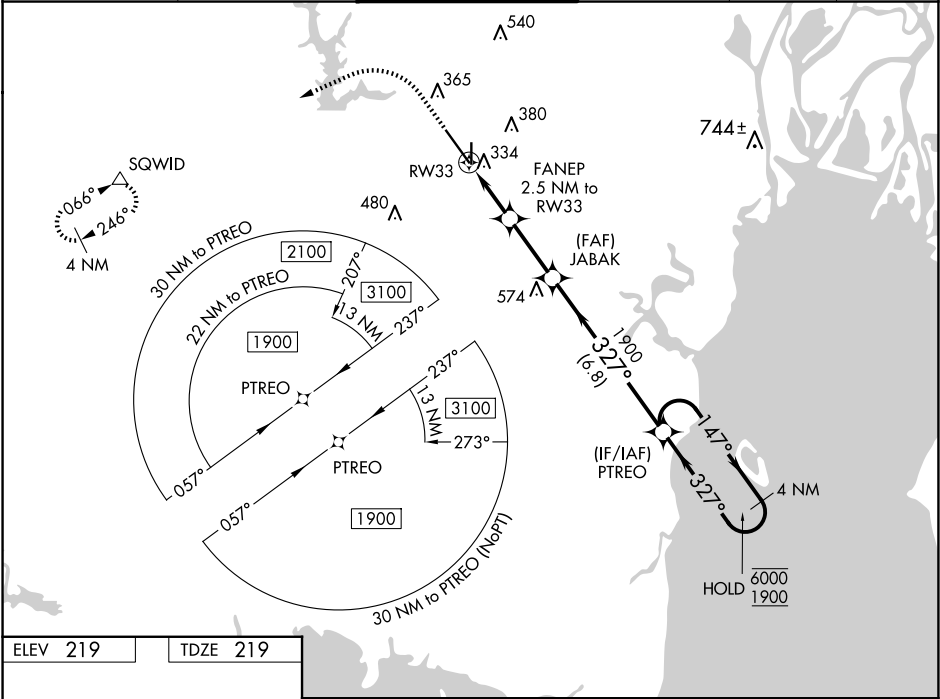


WAAS CH 69306 W33A	APP CRS 327°	Rwy Idg TDZE Apt Elev	8502 219 219
----------------------------------------	------------------------	-----------------------------	-----------------------------------------

RNAV (GPS) RWY 33

MOBILE RGNL (MOB)

RNP APCH - GPS.		MALSR		MISSED APPROACH: Climb to 700 then climbing left turn to 2000 direct SQWID and hold.	
ASR		For uncompensated Baro-VNAV systems, LNAV/VNAV NA below -4°C or above 54°C. For inop ALS, increase LNAV/VNAV all Cots visibility to RVR 4500. * RVR 1800 authorized with use of FD or AP or HUD to DA.			
ATIS	MOBILE APP CON ★	MOBILE TOWER ★	GND CON	CLNC DEL	UNICOM
124.75 257.85	118.5 269.3	118.3 (CTAF) 0 239.0	121.9 348.6	119.85	122.95



ELEV 219

TDZE 219

700

2000

SQWID

VGSI and RNAV glidepath not coincident (VGSI Angle 3.00/TCH 50).

TWR 348

8.602 X 150

4376 X 150

81

36

327°

JABAK

PTREO

4 NM Holding Pattern

1900

327°

147°

6000

1900

GP 3.00°

TCH 57

CATEGORY	A	B	C	D
LPV DA *	419/24 200 (200-½)			
LNAV/VNAV DA	505/24 286 (300-½)			
LNAV MDA	600/24	381 (400-½)	600/35	381 (400-⅝)
CIRCLING	680-1	461 (500-1)	740-1½ 521 (600-1½)	780-2 561 (600-2)