

LOC I-MOB 109.9	APP CRS 147°	Rwy Idg 8502 TDZE 215 Apt Elev 219
---------------------------	------------------------	---

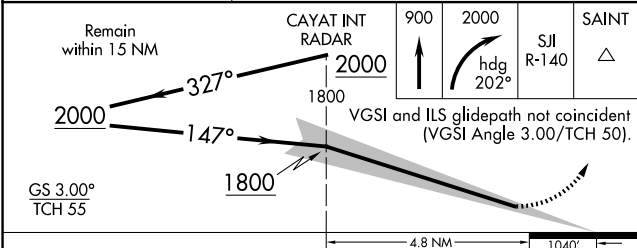
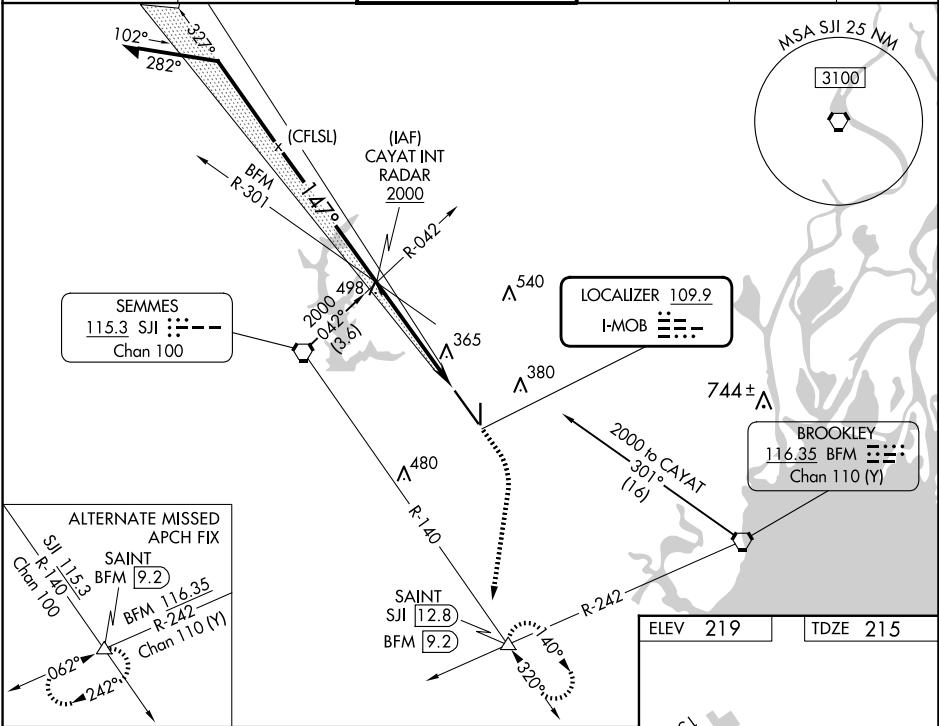
ILS RWY 15 (SA CAT I & II)
MOBILE RGNL (MOB)

Procedure NA when tower closed.
SA CAT I: Requires specific OPSPEC, MSPEC, or LOA approval and use of HUD to DH.
ASR SA CAT II: Reduced Lighting: Requires specific OPSPEC, MSPEC, or LOA approval and use of autoland or HUD to touchdown.

MALSR

MISSED APPROACH: Climb to 900 then climbing right turn to 2000 on heading 202° then on SJI VORTAC R-140 to SAINT/ SJI 12.8 DME and hold.

ATIS 124.75 257.85	MOBILE APP CON ★ 118.5 269.3	MOBILE TOWER ★ 118.3 (CTAF) 0 239.0	GND CON 121.9 348.6	CLNC DEL 119.85	UNICOM 122.95
------------------------------	--	---	-------------------------------	---------------------------	-------------------------



CATEGORY	A	B	C	D
S-ILS 15	SA CAT I	RA 171/14	150	DA 365
S-ILS 15	SA CAT II	RA 109/12	100	DA 315

SA CATEGORY I & II ILS - SPECIAL AIRCREW & AIRCRAFT CERTIFICATION REQUIRED

ELEV 219 TDZE 215

MSA SJI 25 NM
3100

TWR 348

MIRL Rwy 18-36
HIRL Rwy 15-33

SE-4, 07 AUG 2025 to 04 SEP 2025

SE-4, 07 AUG 2025 to 04 SEP 2025