

VOR/DME MSO 112.8 Chan 75	APP CRS 339°	Rwy Ldg TDZE Apt Elev	N/A N/A 3206
---	------------------------	-----------------------------	---

VOR-B
MISSOULA MONTANA (MSO)

RADAR required for procedure entry at JEPSN. DME required.

MISSED APPROACH: Climb to 9600 direct MSO VOR/DME and on MSO VOR/DME R-285 to LIBRE/MSO 23 DME and hold, continue climb-in-hold to 9600.

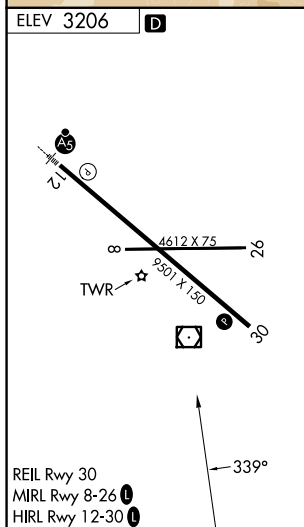
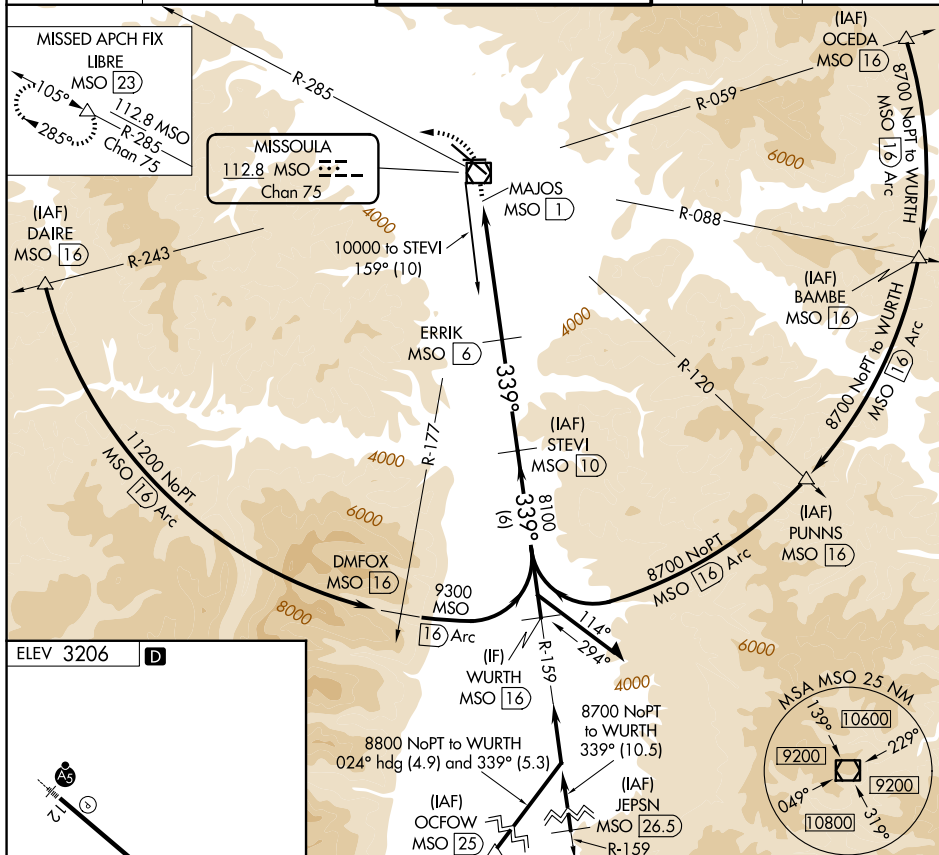
T
A
☸ -11°C

ATIS
126.65

SPOKANE APP CON ★
124.9 298.95

MISSOULA TOWER ★
118.4 (CTAF) **L** 377.175

GND CON
121.9

UNICOM
122.95

9600 ↑	MSO □	MSO R-285	LIBRE △	STEV MSO ⑩	Remain within 10 NM
MSO VOR/DME MAJOS MSO ①		ERRIK MSO ⑥			
1 NM		5 NM	4 NM		
CATEGORY	A	B	C	D	
CIRCLING	4920-1¼ 1714 (1800-1¼)	4920-1½ 1714 (1800-1½)	4920-3 1714 (1800-3)	5160-3 1954 (2000-3)	