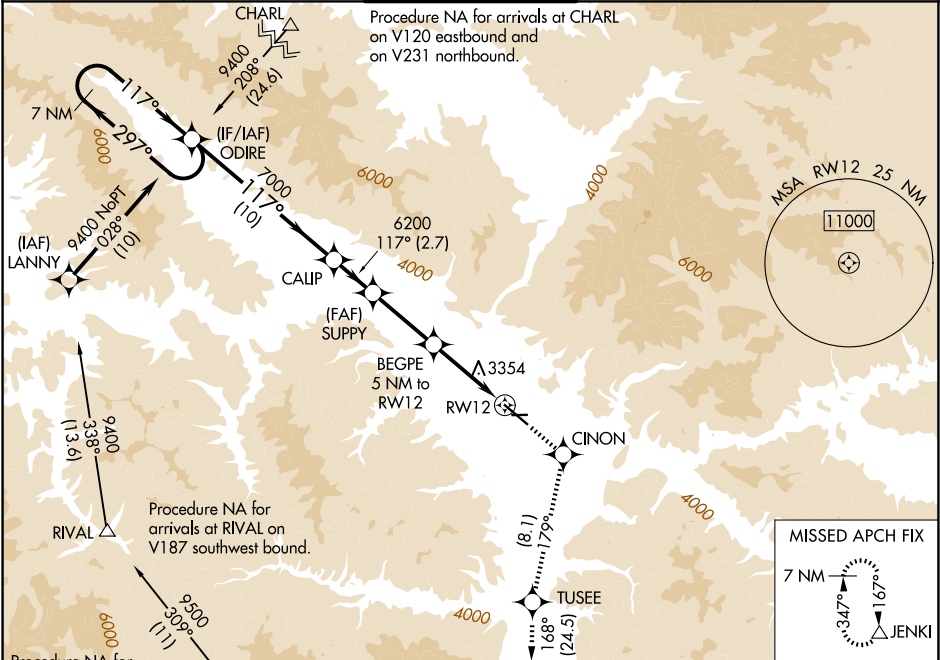


WAAS CH 65715 W12B	APP CRS 117°	Rwy Ldg TDZE Apt Elev	9501 3200 3206
--	------------------------	-----------------------------	---

RNAV (GPS) Y RWY 12
MISSOULA MONTANA (MISO)

RNP APCH.	MALS R	MISSED APPROACH: (Do not exceed 200K until CINON) Climb to 12000 direct CINON and on track 179° to TUSEE and on track 168° to JENKI and hold, continue climb-in-hold to 12000. ## Missed approach requires minimum climb of 325 feet per NM to 7700.
<p>⚠ Circling NA for Cats C and D northeast of Rwy 12-30. Inop table does not apply to LNAV # Cats C/D. Inop table does not apply to LPV † all Cats. **RVR 1800 authorized with use of FD or AP or HUD to DA.</p>	<p>AS</p>	

ATIS 126.65	SPOKANE APP CON * 124.9 298.95	MISSOULA TOWER * 118.4 (CTAF) 0 377.175	GND CON 121.9	UNICOM 122.95
-----------------------	--	---	-------------------------	-------------------------



ELEV 3206	D	TDZE 3200	7 NM Holding Pattern	ODIRE	12000	CINON	tr 179°	TUSEE	tr 168°	JENKI
117°	297°	117°	9400	7000	6200	SUPPLY	BEGPE 5 NM to RW12	*1.2 NM to RW12	RW12	
GP 3.00°	TCH 55		10 NM	2.7 NM	4.3 NM	3.8 NM	1.2 NM			
REIL Rwy 30	MIRL Rwy 8-26	HIRL Rwy 12-30	4612 X 75	9501 X 130						
TDZE 3200										
LPV	DA **		3400/24	200 (200-1/2)						
LPV	DA †		4229-4	1029 (1100-4)						
LNAV	MDA ##		3640/24	440 (500-1/2)	3640/40	440 (500-3/4)				
LNAV	MDA #		4520/40 1320 (1400-3/4)	4520/55 1320 (1400-1)	4520-3	1320 (1400-3)				
CIRCLING			4520-1 1/4 1314 (1400-1 1/4)	4700-1 1/2 1494 (1500-1 1/2)	4700-3	1494 (1500-3)	5140-3 1934 (2000-3)			